

Product datasheet for **AP51932PU-N**

GPR87 (C-term) Rabbit Polyclonal Antibody

Product data:

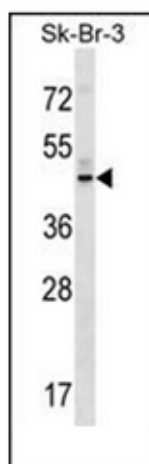
Product Type:	Primary Antibodies
Applications:	WB
Recommended Dilution:	ELISA: 1/1000. Western Blot: 1/100-1/500.
Reactivity:	Human
Host:	Rabbit
Isotype:	Ig
Clonality:	Polyclonal
Immunogen:	KLH conjugated synthetic peptide between 328-357 amino acids from the C-terminal region of Human GPR87 / GPR95
Specificity:	This antibody recognizes Human GPR87 / GPR95 (N-term).
Formulation:	PBS containing 0.09% (W/V) Sodium Azide as preservative State: Aff - Purified State: Liquid purified Ig fraction
Concentration:	lot specific
Purification:	Protein A column, followed by peptide affinity purification
Conjugation:	Unconjugated
Storage:	Store undiluted at 2-8°C for one month or (in aliquots) at -20°C for longer. Avoid repeated freezing and thawing.
Stability:	Shelf life: one year from despatch.
Gene Name:	G protein-coupled receptor 87
Database Link:	Entrez Gene 53836 Human Q9BY21
Background:	G protein-coupled receptors play a role in cell communication. They are characterized by an extracellular N terminus, 7 transmembrane regions, and an intracellular C terminus.
Synonyms:	G-protein coupled receptor 87, FKSG78
Note:	Molecular Weight: 41436 Da



[View online »](#)

Protein Families: Druggable Genome, GPCR, Transmembrane

Product images:



Western blot analysis of GPR87 / GPR95 Antibody (C-term) in SK-BR-3 cell line lysates (35ug/lane). This demonstrates the GPR87 antibody detected the GPR87 protein (arrow).