

## Product datasheet for **AP51929PU-N**

### Melatonin Related Receptor (GPR50) (Center) Rabbit Polyclonal Antibody

#### Product data:

Product Type:	Primary Antibodies
Applications:	FC, WB
Recommended Dilution:	<b>Flow cytometry:</b> 1/10-1/50. <b>Western blot:</b> 1/100-1/500. Enzyme immunoassay: 1/1000.
Reactivity:	Human
Host:	Rabbit
Isotype:	Ig
Clonality:	Polyclonal
Immunogen:	Synthetic peptide - KLH conjugated - corresponding to the center region (between 323-352aa) of human GPR50.
Specificity:	This antibody recognizes GPR50.
Formulation:	PBS with 0.09% (W/V) Sodium azide State: Aff - Purified State: Liquid purified Ig fraction
Concentration:	lot specific
Purification:	Purified through a Protein A column followed by peptide affinity purification
Conjugation:	Unconjugated
Storage:	Store undiluted at 2-8°C for one month or (in aliquots) at -20°C for longer. Avoid repeated freezing and thawing.
Stability:	Shelf life: one year from despatch.
Gene Name:	G protein-coupled receptor 50
Database Link:	<a href="#">Entrez Gene 9248 Human Q13585</a>
Background:	Melatonin-related receptor expression has been documented from human CNS tissues, specifically in hypothalamus and pituitary, but not in human peripheral tissues. In animals, expression has also been seen in the CNS, and peripheral tissues.
Synonyms:	Melatonin-related receptor, G protein-coupled receptor 50, H9



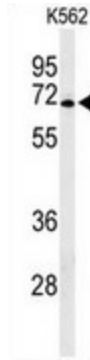
[View online »](#)

**Note:** **Molecular Weight:** 67355 Da

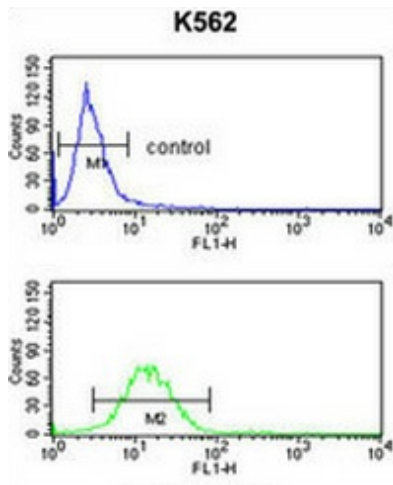
**Protein Families:** Druggable Genome, GPCR, Transmembrane

**Protein Pathways:** Neuroactive ligand-receptor interaction

**Product images:**



Western blot analysis of GPR50 (arrow) in K562 cell line lysates (35ug/lane) using GPR50 antibody.



Flow cytometry analysis of K562 cells (bottom histogram) compared to a negative control cell (top histogram) using GPR50 antibody., followed by FITC-conjugated goat-anti-rabbit secondary antibodies.