

## Product datasheet for **AP51927PU-N**

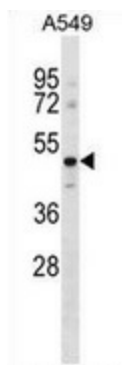
### **GPR37L1 (N-term) Rabbit Polyclonal Antibody**

#### **Product data:**

Product Type:	Primary Antibodies
Applications:	WB
Recommended Dilution:	<b>Western blot:</b> 1/100-1/500. Enzyme immunoassay: 1/1000.
Reactivity:	Human
Host:	Rabbit
Isotype:	Ig
Clonality:	Polyclonal
Immunogen:	Synthetic peptide - KLH conjugated - corresponding to the N-terminal region (between 43-72aa) of human GPR37L1 / ETBRLP2.
Specificity:	This antibody recognizes GPR37L1 / ETBRLP2.
Formulation:	PBS with 0.09% (W/V) Sodium azide State: Aff - Purified State: Liquid purified Ig fraction
Concentration:	lot specific
Purification:	Purified through a Protein A column followed by peptide affinity purification
Conjugation:	Unconjugated
Storage:	Store undiluted at 2-8°C for one month or (in aliquots) at -20°C for longer. Avoid repeated freezing and thawing.
Stability:	Shelf life: one year from despatch.
Gene Name:	G protein-coupled receptor 37 like 1
Database Link:	<a href="#">Entrez Gene 9283 Human O60883</a>
Background:	GPR37L1 is orphan receptor.
Synonyms:	ETBR-LP-2, G-protein coupled receptor 37-like 1
Note:	<b>Molecular Weight:</b> 52771 Da
Protein Families:	Druggable Genome, GPCR, Transmembrane



[View online »](#)

**Product images:**

Western blot analysis in A549 cell line lysates (35ug/lane) using GPR37L1/ETBRLP2 antibody. This demonstrates the GPR37L1 antibody detected the GPR37L1 protein (arrow).