

Product datasheet for **AP51924PU-N**

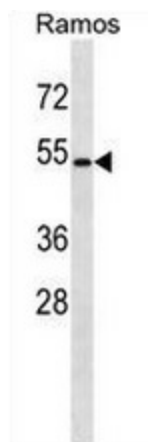
GPR 174 (GPR174) (C-term) Rabbit Polyclonal Antibody

Product data:

Product Type:	Primary Antibodies
Applications:	WB
Recommended Dilution:	This antibody is suitable for Western blotting . The suggested dilution is: 1/1000.
Reactivity:	Human
Host:	Rabbit
Isotype:	Ig
Clonality:	Polyclonal
Immunogen:	Synthetic peptide - KLH conjugated - corresponding to the C-terminal region (between 282-310aa) of human GPR174.
Specificity:	This antibody detects human GPR174 at C-term.
Formulation:	PBS with 0.09% (W/V) Sodium Azide. State: Aff - Purified State: Liquid purified Ig fraction
Concentration:	lot specific
Purification:	Purified through a protein A column; followed by peptide affinity purification.
Conjugation:	Unconjugated
Storage:	Store the antibody undiluted at 2-8°C for one month or (in aliquots) at -20°C for longer. Avoid repeated freezing and thawing.
Stability:	Shelf life: one year from despatch.
Gene Name:	G protein-coupled receptor 174
Database Link:	Entrez Gene 84636 Human Q9BXC1
Background:	Putative receptor for purines coupled to G-proteins (By similarity).
Synonyms:	G-protein coupled receptor 174, JEG18, FKSG79
Note:	Molecular Weight: 38503 Da
Protein Families:	Druggable Genome, GPCR, Transmembrane



[View online »](#)

Product images:

Western blot analysis in Ramos cell line lysates (35ug/lane) using GPR174 antibody. This demonstrates the GPR174 antibody detected the GPR174 protein (arrow).