

Product datasheet for **AP51923PU-N**

GPR17 (Center) Rabbit Polyclonal Antibody

Product data:

Product Type:	Primary Antibodies
Applications:	FC, IHC, WB
Recommended Dilution:	This antibody is suitable for flow cytometry, immunohistochemistry on paraffin sections and Western blotting. The suggested dilution is: Flow cytometry: 1/10-1/50. Immunohistochemistry on paraffin sections: 1/50-1/100. Western blotting: 1/100-1/500.
Reactivity:	Human
Host:	Rabbit
Isotype:	Ig
Clonality:	Polyclonal
Immunogen:	Synthetic peptide - KLH conjugated - corresponding to the central region (between 237-266aa) of human GPR17.
Specificity:	This antibody detects human GPR17.
Formulation:	PBS with 0.09% (W/V) Sodium Azide. State: Aff - Purified State: Liquid purified Ig fraction
Concentration:	lot specific
Purification:	Purified through a protein A column; followed by peptide affinity purification.
Conjugation:	Unconjugated
Storage:	Store the antibody undiluted at 2-8°C for one month or (in aliquots) at -20°C for longer. Avoid repeated freezing and thawing.
Stability:	Shelf life: one year from despatch.
Gene Name:	G protein-coupled receptor 17
Database Link:	Entrez Gene 2840 Human Q13304



[View online »](#)

Background:

Members of the G protein coupled receptor (GPCR) superfamily contain 7 transmembrane domains and transduce extracellular signals through heterotrimeric G proteins. The organization of the GPR17 gene differs from that of many other GPCRs in that the open reading frame is distributed on 2 exons; an additional exon contains the 5 prime untranslated region. Human GPR17 is expressed as 2.3 and 6.3 kb mRNAs exclusively in brain. The 2 transcripts appear to represent alternatively polyadenylated variants. Based on protein sequence homology and the conservation of certain key residues, GPR17 appears to be closely related to the P2Y family of GPCRs. There are two named isoforms.

Synonyms:

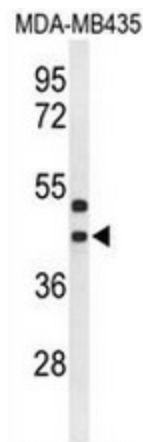
UDP/CysLT receptor, G-protein coupled receptor 17, P2Y-like receptor, R12

Note:

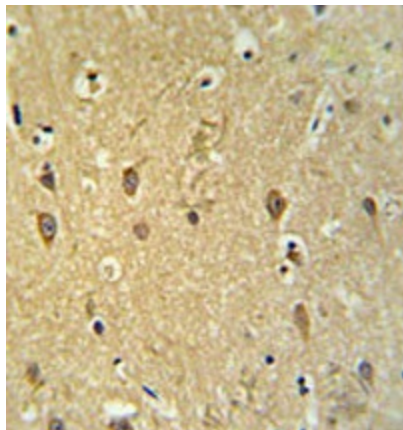
Molecular Weight: 40989 Da

Protein Families:

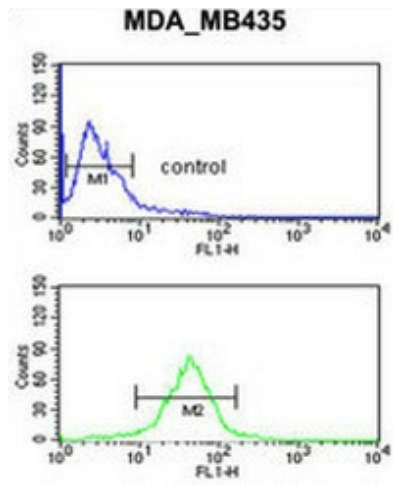
Druggable Genome, GPCR, Transmembrane

Product images:

Western blot analysis of GPR17 (arrow) in MDA-MB435 cell line lysates (35ug/lane) using GPR17 antibody.



Immunohistochemistry analysis in brain tissue (formalin-fixed, paraffin-embedded) using GPR17 antibody., followed by peroxidase conjugation of the secondary antibody and DAB staining. This data demonstrates the use of the GPR17 antibody for IHC. Clinical relevance has not been evaluated.



Flow cytometric analysis of MDA-MB435 cells (bottom histogram) compared to a negative control cell (top histogram) using GPR17 antibody. FITC-conjugated goat-anti-rabbit secondary antibodies were used for the analysis.