

## Product datasheet for **AP51922PU-N**

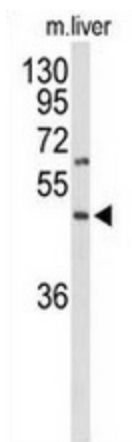
### GPCR150 (GPR160) (C-term) Rabbit Polyclonal Antibody

#### Product data:

Product Type:	Primary Antibodies
Applications:	WB
Recommended Dilution:	This antibody is suitable for <b>Western blotting</b> . The suggested dilution is: 1/100-1/500.
Reactivity:	Human, Mouse
Host:	Rabbit
Isotype:	Ig
Clonality:	Polyclonal
Immunogen:	Synthetic peptide - KLH conjugated - corresponding to the C-terminal region (between 309-338aa) from of human GPR160/GPCR150.
Specificity:	This antibody detects GPR160/GPCR150 at C-term.
Formulation:	PBS with 0.09% (W/V) Sodium Azide. State: Aff - Purified State: Liquid purified Ig fraction
Concentration:	lot specific
Purification:	Purified through a protein A column; followed by peptide affinity purification.
Conjugation:	Unconjugated
Storage:	Store the antibody undiluted at 2-8°C for one month or (in aliquots) at -20°C for longer. Avoid repeated freezing and thawing.
Stability:	Shelf life: one year from despatch.
Gene Name:	G protein-coupled receptor 160
Database Link:	<a href="#">Entrez Gene 26996 Human Q9UJ42</a>
Background:	GPR160 is an orphan receptor.
Synonyms:	G-protein coupled receptor 160, GPCR1
Note:	<b>Molecular Weight:</b> 39787 Da
Protein Families:	Druggable Genome, GPCR, Transmembrane



[View online »](#)

**Product images:**

Western blot analysis of GPR160 (arrow) in mouse liver tissue lysates (35ug/lane) using GPR160/GPCR150 antibody. (C-term).