

Product datasheet for **AP51920PU-N**

GPR 153 (GPR153) (N-term) Rabbit Polyclonal Antibody

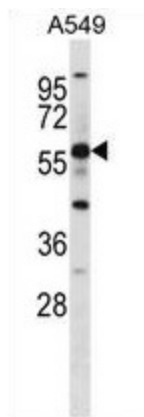
Product data:

Product Type:	Primary Antibodies
Applications:	WB
Recommended Dilution:	This antibody is suitable for Western blotting . The suggested dilution is 1/100-1/500.
Reactivity:	Human
Host:	Rabbit
Isotype:	Ig
Clonality:	Polyclonal
Immunogen:	KLH conjugated synthetic peptide from the N-terminal region (between 51-80 aa) of human GPR153.
Specificity:	This antibody detects human GPR153 at N-term.
Formulation:	PBS with 0.09% (W/V) Sodium Azide. State: Aff - Purified State: Liquid purified Ig fraction
Concentration:	lot specific
Purification:	Purified through a protein A column; followed by peptide affinity purification.
Conjugation:	Unconjugated
Storage:	Store the antibody undiluted at 2-8°C for one month or (in aliquots) at -20°C for longer. Avoid repeated freezing and thawing.
Stability:	Shelf life: one year from despatch.
Gene Name:	G protein-coupled receptor 153
Database Link:	Entrez Gene 387509 Human Q6NV75
Background:	GPR153 is an Orphan-U GPCR with an unknown ligand.
Synonyms:	G-protein coupled receptor 153
Note:	Molecular Weight: 65361 Da
Protein Families:	Druggable Genome, Transmembrane



[View online »](#)

Product images:



Western blot analysis in A549 cell line lysates (35ug/lane) using GPR153 antibody. (N-term). This demonstrates the GPR153 antibody detected the GPR153 protein (arrow).