

## Product datasheet for **AP51918PU-N**

### GPR142 (N-term) Rabbit Polyclonal Antibody

#### Product data:

Product Type:	Primary Antibodies
Applications:	FC, WB
Recommended Dilution:	<b>ELISA:</b> 1/1000. <b>Western blot:</b> 1/100 - 1/500. <b>Flow Cytometry:</b> 1/10 - 1/50.
Reactivity:	Human
Host:	Rabbit
Isotype:	Ig
Clonality:	Polyclonal
Immunogen:	KLH conjugated synthetic peptide between 93-122 amino acids from the N-terminal region of human GPR142
Specificity:	This antibody reacts to GPR142.
Formulation:	PBS State: Aff - Purified State: Liquid purified Ig fraction Preservative: 0.09% (W/V) sodium azide
Concentration:	lot specific
Purification:	Affinity chromatography on Protein A
Conjugation:	Unconjugated
Storage:	Store the antibody undiluted at 2-8°C for one month or (in aliquots) at -20°C for longer. Avoid repeated freezing and thawing.
Stability:	Shelf life: one year from despatch.
Predicted Protein Size:	51106 Da
Gene Name:	G protein-coupled receptor 142
Database Link:	<a href="#">Entrez Gene 350383 Human Q7Z601</a>
Background:	GPR142 is a member of the rhodopsin family of G protein-coupled receptors (GPRs) (Fredriksson et al., 2003 [PubMed 14623098]).

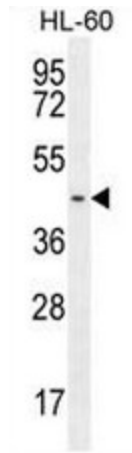


[View online »](#)

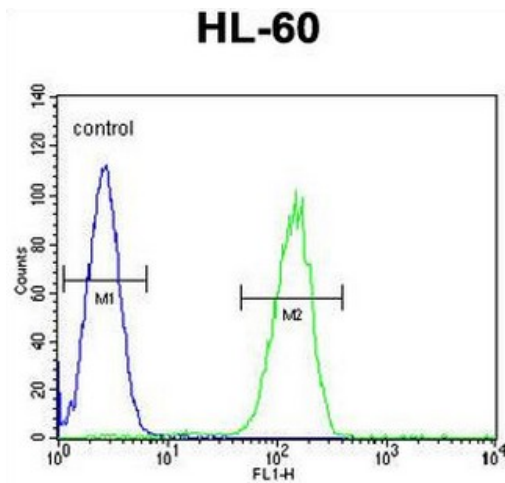
**Synonyms:** Probable G-protein coupled receptor 142, G-protein coupled receptor PGR2

**Protein Families:** Druggable Genome, GPCR, Transmembrane

**Product images:**



GPR142 Antibody (N-term) western blot analysis in HL-60 cell line lysates (35ug/lane). This demonstrates the GPR142 antibody detected the GPR142 protein (arrow).



GPR142 Antibody (N-term) flow cytometric analysis of HL-60 cells (right histogram) compared to a negative control cell (left histogram). FITC-conjugated goat-anti-rabbit secondary antibodies were used for the analysis.