

Product datasheet for **AP51916PU-N**

GPR133 (ADGRD1) (Center) Rabbit Polyclonal Antibody

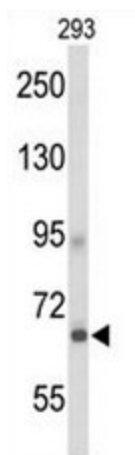
Product data:

Product Type:	Primary Antibodies
Applications:	WB
Recommended Dilution:	ELISA: 1/1000. Western blot: 1/100 - 1/500.
Reactivity:	Human
Host:	Rabbit
Isotype:	Ig
Clonality:	Polyclonal
Immunogen:	KLH conjugated synthetic peptide between 477~507 amino acids from the Central region of human GPR133
Specificity:	This antibody reacts to GPR133.
Formulation:	PBS State: Aff - Purified State: Liquid purified Ig fraction Preservative: 0.09% (W/V) sodium azide
Concentration:	lot specific
Purification:	Affinity chromatography on Protein A
Conjugation:	Unconjugated
Storage:	Store the antibody undiluted at 2-8°C for one month or (in aliquots) at -20°C for longer. Avoid repeated freezing and thawing.
Stability:	Shelf life: one year from despatch.
Predicted Protein Size:	96530 Da
Gene Name:	adhesion G protein-coupled receptor D1
Database Link:	Entrez Gene 283383 Human Q6QNK2
Synonyms:	G-protein coupled receptor 133
Protein Families:	Druggable Genome, Transmembrane



[View online »](#)

Product images:



Western blot analysis of GPR133 Antibody (Center) in 293 cell line lysates (35ug/lane). GPR133 (arrow) was detected using the purified Pab.