

Product datasheet for **AP51915PU-N**

XAB1 (GPN1) (C-term) Rabbit Polyclonal Antibody

Product data:

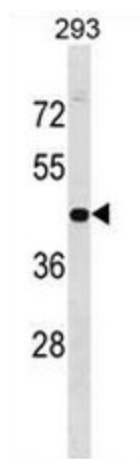
Product Type:	Primary Antibodies
Applications:	WB
Recommended Dilution:	ELISA: 1/1000. Western blot: 1/100 - 1/500.
Reactivity:	Human
Host:	Rabbit
Isotype:	Ig
Clonality:	Polyclonal
Immunogen:	KLH conjugated synthetic peptide between 324-352 amino acids from the C-terminal region of human GPN1
Specificity:	This antibody reacts to GPN1.
Formulation:	PBS State: Aff - Purified State: Liquid purified Ig fraction Preservative: 0.09% (W/V) sodium azide
Concentration:	lot specific
Purification:	Affinity chromatography on Protein A
Conjugation:	Unconjugated
Storage:	Store the antibody undiluted at 2-8°C for one month or (in aliquots) at -20°C for longer. Avoid repeated freezing and thawing.
Stability:	Shelf life: one year from despatch.
Predicted Protein Size:	41740 Da
Gene Name:	GPN-loop GTPase 1
Database Link:	Entrez Gene 11321 Human Q9HCN4
Background:	This gene encodes a guanosine triphosphatase enzyme. The encoded protein may play a role in DNA repair and may function in activation of transcription. Alternatively spliced transcript variants have been described.



[View online »](#)

Synonyms: MBDIN, HUSSY-23

Product images:



GPN1 Antibody (C-term) western blot analysis in 293 cell line lysates (35ug/lane). This demonstrates the GPN1 antibody detected the GPN1 protein (arrow).