

Product datasheet for **AP51914PU-N**

GPM6B (N-term) Rabbit Polyclonal Antibody

Product data:

| | |
|-------------------------|---|
| Product Type: | Primary Antibodies |
| Applications: | FC, WB |
| Recommended Dilution: | ELISA: 1/1000. Western Blot: 1/100 - 1/500. Flow Cytometry: 1/10 - 1/50. |
| Reactivity: | Human |
| Host: | Rabbit |
| Isotype: | Ig |
| Clonality: | Polyclonal |
| Immunogen: | KLH conjugated synthetic peptide between 1-30 amino acids from the N-terminal region of human GPM6B |
| Specificity: | This antibody reacts to GPM6B. |
| Formulation: | PBS State: Aff - Purified State: Liquid purified Ig fraction Preservative: 0.09% (W/V) sodium azide |
| Concentration: | lot specific |
| Conjugation: | Unconjugated |
| Storage: | Store the antibody undiluted at 2-8°C for one month or (in aliquots) at -20°C for longer. Avoid repeated freezing and thawing. |
| Stability: | Shelf life: one year from despatch. |
| Predicted Protein Size: | 28989 Da |
| Gene Name: | glycoprotein M6B |
| Database Link: | Entrez Gene 2824 Human Q13491 |



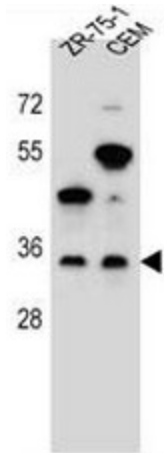
[View online »](#)

Background: This gene encodes a membrane glycoprotein that belongs to the proteolipid protein family. Proteolipid protein family members are expressed in most brain regions and are thought to be involved in cellular housekeeping functions, such as membrane trafficking and cell-to-cell communication.

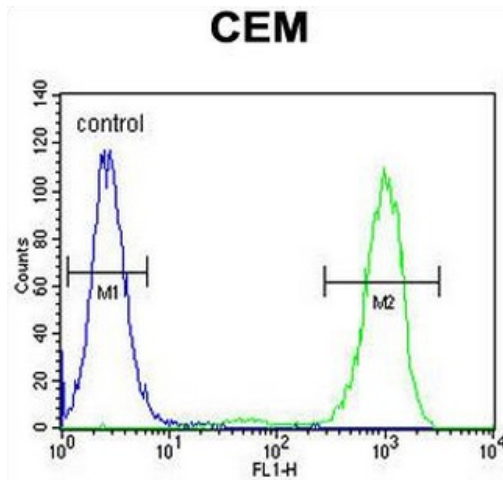
Synonyms: M6B

Protein Families: Transmembrane

Product images:



GPM6B Antibody (N-term) western blot analysis in ZR-75-1, CEM cell line lysates (35ug/lane). This demonstrates the GPM6B antibody detected the GPM6B protein (arrow).



GPM6B Antibody (N-term) flow cytometric analysis of CEM cells (right histogram) compared to a negative control cell (left histogram). FITC-conjugated goat-anti-rabbit secondary antibodies were used for the analysis.