

## Product datasheet for **AP51912PU-N**

### Neuronal membrane glycoprotein M6 a (GPM6A) (C-term) Rabbit Polyclonal Antibody

#### Product data:

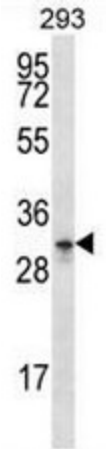
Product Type:	Primary Antibodies
Applications:	IHC, WB
Recommended Dilution:	<b>ELISA:</b> 1/1000. <b>Western Blot:</b> 1/100 - 1/500. <b>Immunohistochemistry on paraffin sections:</b> 1/10 - 1/50.
Reactivity:	Human
Host:	Rabbit
Isotype:	Ig
Clonality:	Polyclonal
Immunogen:	KLH conjugated synthetic peptide between 253-278 amino acids from the C-terminal region of human GPM6A
Specificity:	This antibody reacts to GPM6A.
Formulation:	PBS State: Aff - Purified State: Liquid purified Ig fraction Preservative: 0.09% (W/V) sodium azide
Concentration:	lot specific
Purification:	Affinity chromatography on Protein A
Conjugation:	Unconjugated
Storage:	Store the antibody undiluted at 2-8°C for one month or (in aliquots) at -20°C for longer. Avoid repeated freezing and thawing.
Stability:	Shelf life: one year from despatch.
Predicted Protein Size:	31210 Da
Gene Name:	glycoprotein M6A
Database Link:	<a href="#">Entrez Gene 2823 Human P51674</a>
Synonyms:	M6A; M6a; MGC38999



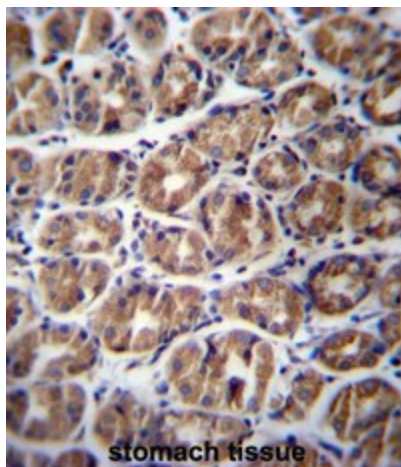
[View online »](#)

Protein Families: Transmembrane

**Product images:**



GPM6A Antibody (C-term) western blot analysis in 293 cell line lysates (35ug/lane). This demonstrates the GPM6A antibody detected the GPM6A protein (arrow).



GPM6A Antibody (C-term) immunohistochemistry analysis in formalin fixed and paraffin embedded human stomach tissue followed by peroxidase conjugation of the secondary antibody and DAB staining. This data demonstrates the use of GPM6A Antibody (C-term) for immunohistochemistry. Clinical relevance has not been evaluated.