

Product datasheet for **AP51910PU-N**

Glucose 6 phosphate isomerase (GPI) (C-term) Rabbit Polyclonal Antibody

Product data:

Product Type:	Primary Antibodies
Applications:	FC, WB
Recommended Dilution:	ELISA: 1/1000. Western Blot: 1/100 - 1/500. Flow Cytometry: 1/10 - 1/50.
Reactivity:	Human, Mouse
Host:	Rabbit
Isotype:	Ig
Clonality:	Polyclonal
Immunogen:	KLH conjugated synthetic peptide between 452~481 amino acids from the C-terminal region of human GPI
Specificity:	This antibody reacts to GPI.
Formulation:	PBS State: Aff - Purified State: Liquid purified Ig fraction Preservative: 0.09% (W/V) sodium azide
Concentration:	lot specific
Purification:	Affinity chromatography on Protein A
Conjugation:	Unconjugated
Storage:	Store the antibody undiluted at 2-8°C for one month or (in aliquots) at -20°C for longer. Avoid repeated freezing and thawing.
Stability:	Shelf life: one year from despatch.
Predicted Protein Size:	63147 Da
Gene Name:	glucose-6-phosphate isomerase
Database Link:	Entrez Gene 2821 Human P06744



[View online »](#)

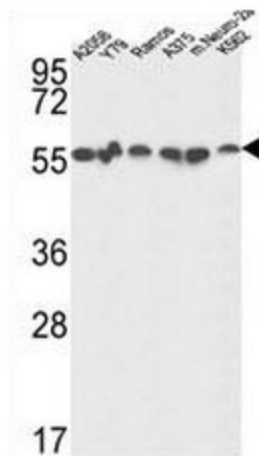
Background: GPI belongs to the GPI family whose members encode multifunctional phosphoglucose isomerase proteins involved in energy pathways. The protein encoded by this gene is a dimeric enzyme that catalyzes the reversible isomerization of glucose-6-phosphate and fructose-6-phosphate. The protein functions in different capacities inside and outside the cell. In the cytoplasm, the gene product is involved in glycolysis and gluconeogenesis, while outside the cell it functions as a neurotrophic factor for spinal and sensory neurons. Defects in this gene are the cause of nonspherocytic hemolytic anemia and a severe enzyme deficiency can be associated with hydrops fetalis, immediate neonatal death and neurological impairment.

Synonyms: Phosphoglucose isomerase, PGI, Phosphohexose isomerase, PHI, Neuroleukin, NLK

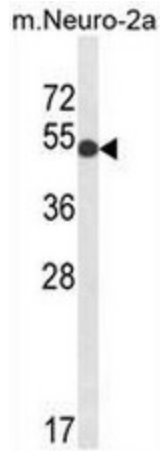
Protein Families: Druggable Genome

Protein Pathways: Amino sugar and nucleotide sugar metabolism, Glycolysis / Gluconeogenesis, Metabolic pathways, Pentose phosphate pathway, Starch and sucrose metabolism

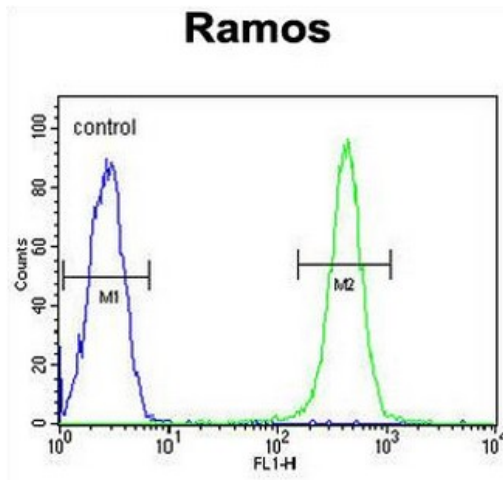
Product images:



GPI Antibody (C-term) western blot analysis in A2058, Y79, Ramos, A375, K562 and mouse Neuro-2a cell line lysates (35ug/lane). This demonstrates the GPI antibody detected the GPI protein (arrow).



Western blot analysis of GPI Antibody (C-term) in mouse Neuro-2a cell lysates (35ug/lane).GPI (arrow) was detected using the purified Pab.



GPI Antibody (C-term) flow cytometric analysis of Ramos cells (right histogram) compared to a negative control cell (left histogram).FITC-conjugated goat-anti-rabbit secondary antibodies were used for the analysis.