

Product datasheet for **AP51907PU-N**

G protein coupled receptor 30 (GPER1) (C-term) Rabbit Polyclonal Antibody

Product data:

Product Type:	Primary Antibodies
Applications:	WB
Recommended Dilution:	ELISA: 1/1000. Western Blot: 1/100 - 1/500.
Reactivity:	Human, Mouse
Host:	Rabbit
Isotype:	Ig
Clonality:	Polyclonal
Immunogen:	KLH conjugated synthetic peptide between 345-375 amino acids from the C-terminal region of human GPER
Specificity:	This antibody reacts to GPER.
Formulation:	PBS State: Aff - Purified State: Liquid purified Ig fraction Preservative: 0.09% (W/V) sodium azide
Concentration:	lot specific
Purification:	Affinity chromatography on Protein A followed by peptide affinity purification.
Conjugation:	Unconjugated
Storage:	Store the antibody undiluted at 2-8°C for one month or (in aliquots) at -20°C for longer. Avoid repeated freezing and thawing.
Stability:	Shelf life: one year from despatch.
Predicted Protein Size:	42248 Da
Gene Name:	G protein-coupled estrogen receptor 1
Database Link:	Entrez Gene 76854 Mouse Entrez Gene 2852 Human Q99527



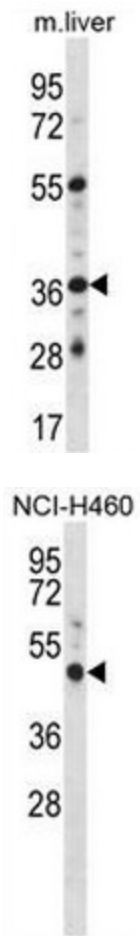
[View online »](#)

Background: This gene is a member of the G-protein coupled receptor 1 family and encodes a multi-pass membrane protein that localizes to the endoplasmic reticulum. The protein binds estrogen, resulting in intracellular calcium mobilization and synthesis of phosphatidylinositol 3,4,5-trisphosphate in the nucleus. This protein therefore plays a role in the rapid nongenomic signaling events widely observed following stimulation of cells and tissues with estrogen. Alternate transcriptional splice variants which encode the same protein have been characterized. [provided by RefSeq].

Synonyms: G-protein coupled receptor 30, Chemoattractant receptor-like 2, GPCR-BR, CEPR, CMKRL2, DRY12, FEG1, LYGPR

Protein Families: Druggable Genome, GPCR, Transmembrane

Product images:



GPER Antibody (C-term) western blot analysis in mouse liver tissue lysates (35ug/lane). This demonstrates the GPER antibody detected the GPER protein (arrow).

GPER Antibody (C-term) western blot analysis in NCI-H460 cell line lysates (35ug/lane). This demonstrates the GPER antibody detected the GPER protein (arrow).