

## Product datasheet for **AP51903PU-N**

### Glypican 5 (GPC5) (N-term) Rabbit Polyclonal Antibody

#### Product data:

Product Type:	Primary Antibodies
Applications:	IHC, WB
Recommended Dilution:	<b>ELISA:</b> 1/1000. <b>Western Blot:</b> 1/100 - 1/500. <b>Immunohistochemistry on paraffin sections:</b> 1/50 - 1/100.
Reactivity:	Human, Mouse
Host:	Rabbit
Isotype:	Ig
Clonality:	Polyclonal
Immunogen:	KLH conjugated synthetic peptide between 59-88 amino acids from the N-terminal region of human GPC5
Specificity:	This antibody reacts to GPC5.
Formulation:	PBS State: Aff - Purified State: Liquid purified Ig fraction Preservative: 0.09% (W/V) sodium azide
Concentration:	lot specific
Purification:	Affinity chromatography on Protein A
Conjugation:	Unconjugated
Storage:	Store the antibody undiluted at 2-8°C for one month or (in aliquots) at -20°C for longer. Avoid repeated freezing and thawing.
Stability:	Shelf life: one year from despatch.
Predicted Protein Size:	63707 Da
Gene Name:	glypican 5
Database Link:	<a href="#">Entrez Gene 103978 Mouse</a> <a href="#">Entrez Gene 2262 Human</a> <a href="#">P78333</a>



[View online »](#)

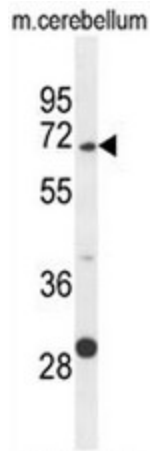
**Background:**

Cell surface heparan sulfate proteoglycans are composed of a membrane-associated protein core substituted with a variable number of heparan sulfate chains. Members of the glypican-related integral membrane proteoglycan family (GRIPS) contain a core protein anchored to the cytoplasmic membrane via a glycosyl phosphatidylinositol linkage. These proteins may play a role in the control of cell division and growth regulation. [provided by RefSeq].

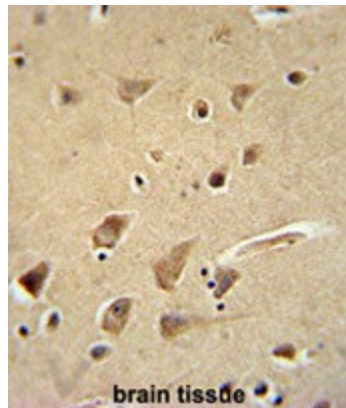
**Synonyms:**

bA93M14.1

**Product images:**



GPC5 Antibody (N-term) western blot analysis in mouse cerebellum tissue lysates (35ug/lane). This demonstrates the GPC5 antibody detected the GPC5 protein (arrow).



GPC5 Antibody (N-term) immunohistochemistry analysis in formalin fixed and paraffin embedded human brain tissue followed by peroxidase conjugation of the secondary antibody and DAB staining. This data demonstrates the use of the GPC5 Antibody (N-term) for immunohistochemistry. Clinical relevance has not been evaluated.