

Product datasheet for **AP51902PU-N**

Glypican 3 (GPC3) (C-term) Rabbit Polyclonal Antibody

Product data:

Product Type:	Primary Antibodies
Applications:	WB
Recommended Dilution:	ELISA: 1/1000. Western Blot: 1/100 - 1/500.
Reactivity:	Human
Host:	Rabbit
Isotype:	Ig
Clonality:	Polyclonal
Immunogen:	KLH conjugated synthetic peptide between 464-494 amino acids from the C-terminal region of human GPC3
Specificity:	This antibody reacts to GPC3.
Formulation:	Purified polyclonal antibody supplied in PBS with 0.09% (W/V) sodium azide. This antibody is purified through a protein A column; followed by peptide affinity purification. State: Aff - Purified State: Liquid purified Ig fraction
Concentration:	lot specific
Purification:	Affinity chromatography on Protein A
Conjugation:	Unconjugated
Storage:	Store the antibody undiluted at 2-8°C for one month or (in aliquots) at -20°C for longer. Avoid repeated freezing and thawing.
Stability:	Shelf life: one year from despatch.
Predicted Protein Size:	65563 Da
Gene Name:	glypican 3
Database Link:	Entrez Gene 2719 Human P51654



[View online »](#)

Background:

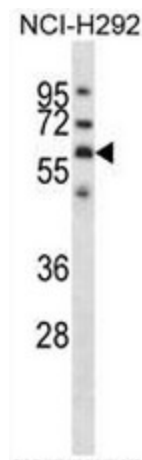
Cell surface heparan sulfate proteoglycans are composed of a membrane-associated protein core substituted with a variable number of heparan sulfate chains. Members of the glypican-related integral membrane proteoglycan family (GRIPS) contain a core protein anchored to the cytoplasmic membrane via a glycosyl phosphatidylinositol linkage. These proteins may play a role in the control of cell division and growth regulation. The protein encoded by this gene can bind to and inhibit the dipeptidyl peptidase activity of CD26, and it can induce apoptosis in certain cell types. Deletion mutations in this gene are associated with Simpson-Golabi-Behmel syndrome, also known as Simpson dysmorphism syndrome. Alternative splicing results in multiple transcript variants.

Synonyms:

Intestinal protein OCI-5, GTR2-2, MXR7, OCI5

Protein Families:

Druggable Genome

Product images:

GPC3 Antibody (C-term) western blot analysis in NCI-H292 cell line lysates (35ug/lane). This demonstrates the GPC3 antibody detected the GPC3 protein (arrow).