

Product datasheet for **AP51898PU-N**

GPAA1 (N-term) Rabbit Polyclonal Antibody

Product data:

Product Type:	Primary Antibodies
Applications:	FC, IHC, WB
Recommended Dilution:	ELISA: 1/1000. Western Blot: 1/100 - 1/500. Immunohistochemistry on paraffin sections: 1/50 - 1/100. Flow Cytometry: 1/10 - 1/50.
Reactivity:	Human
Host:	Rabbit
Isotype:	Ig
Clonality:	Polyclonal
Immunogen:	KLH conjugated synthetic peptide between 49-77 amino acids from the N-terminal region of human GPAA1
Specificity:	This antibody reacts to GPAA1.
Formulation:	PBS State: Aff - Purified State: Liquid purified Ig fraction Preservative: 0.09% (W/V) sodium azide
Concentration:	lot specific
Purification:	Affinity chromatography on Protein A
Conjugation:	Unconjugated
Storage:	Store the antibody undiluted at 2-8°C for one month or (in aliquots) at -20°C for longer. Avoid repeated freezing and thawing.
Stability:	Shelf life: one year from despatch.
Predicted Protein Size:	67623 Da
Gene Name:	glycosylphosphatidylinositol anchor attachment 1
Database Link:	Entrez Gene 8733 Human O43292



[View online »](#)

Background:

Posttranslational glycosylphosphatidylinositol (GPI) anchor attachment serves as a general mechanism for linking proteins to the cell surface membrane. The protein encoded by this gene presumably functions in GPI anchoring at the GPI transfer step. The mRNA transcript is ubiquitously expressed in both fetal and adult tissues. The anchor attachment protein 1 contains an N-terminal signal sequence, 1 cAMP- and cGMP-dependent protein kinase phosphorylation site, 1 leucine zipper pattern, 2 potential N-glycosylation sites, and 8 putative transmembrane domains.

Synonyms:

GPI anchor attachment protein 1

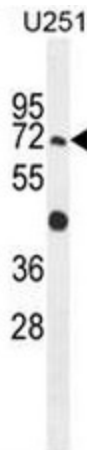
Protein Families:

Transmembrane

Protein Pathways:

Glycosylphosphatidylinositol(GPI)-anchor biosynthesis, Metabolic pathways

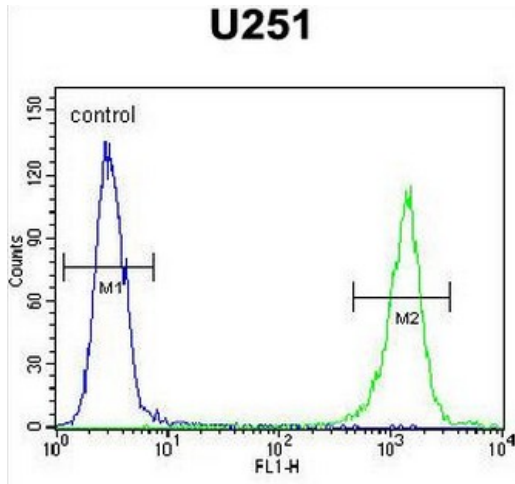
Product images:



GPAA1 Antibody (N-term) western blot analysis in U251 cell line lysates (35ug/lane). This demonstrates the GPAA1 antibody detected the GPAA1 protein (arrow).



GPAA1 antibody (N-term) immunohistochemistry analysis in formalin fixed and paraffin embedded human skeletal muscle followed by peroxidase conjugation of the secondary antibody and DAB staining. This data demonstrates the use of the GPAA1 antibody (N-term) for immunohistochemistry. Clinical relevance has not been evaluated.



GPAA1 Antibody (N-term) flow cytometric analysis of U251 cells (right histogram) compared to a negative control cell (left histogram). FITC-conjugated goat-anti-rabbit secondary antibodies were used for the analysis.