

Product datasheet for **AP51896PU-N**

GPR111 (ADGRF2) (Center) Rabbit Polyclonal Antibody

Product data:

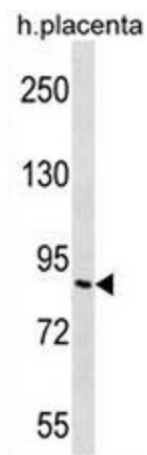
Product Type:	Primary Antibodies
Applications:	IHC, WB
Recommended Dilution:	ELISA: 1/1000. Western Blot: 1/100 - 1/500. Immunohistochemistry on paraffin sections: 1/10 - 1/50.
Reactivity:	Human
Host:	Rabbit
Isotype:	Ig
Clonality:	Polyclonal
Immunogen:	KLH conjugated synthetic peptide between 365-394 amino acids from the Central region of human GP11
Specificity:	This antibody reacts to GP111.
Formulation:	PBS State: Aff - Purified State: Liquid purified Ig fraction Preservative: 0.09% (W/V) sodium azide
Concentration:	lot specific
Purification:	Affinity chromatography on Protein A
Conjugation:	Unconjugated
Storage:	Store the antibody undiluted at 2-8°C for one month or (in aliquots) at -20°C for longer. Avoid repeated freezing and thawing.
Stability:	Shelf life: one year from despatch.
Gene Name:	adhesion G protein-coupled receptor F2
Database Link:	Entrez Gene 222611 Human Q8IZF7
Synonyms:	Adhesion G-protein coupled receptor F2, PGR20, G-protein coupled receptor 111, G-protein coupled receptor PGR20
Note:	Molecular Weight: 78569 Da



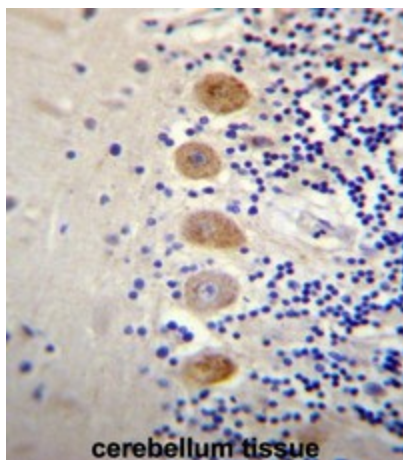
[View online »](#)

Protein Families: Druggable Genome, Transmembrane

Product images:



GP111 Antibody (Center) western blot analysis in human placenta tissue lysates (35ug/lane). This demonstrates the GP111 antibody detected the GP111 protein (arrow).



GP111 Antibody (Center) immunohistochemistry analysis in formalin fixed and paraffin embedded human cerebellum tissue followed by peroxidase conjugation of the secondary antibody and DAB staining. This data demonstrates the use of GP111 Antibody (Center) for immunohistochemistry. Clinical relevance has not been evaluated.