

Product datasheet for **AP51895PU-N**

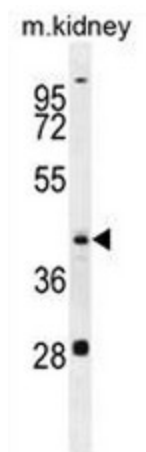
GOT1L1 (C-term) Rabbit Polyclonal Antibody

Product data:

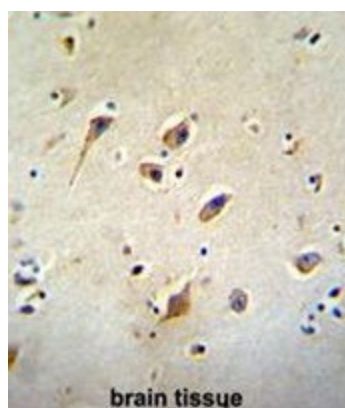
Product Type:	Primary Antibodies
Applications:	IF, IHC, WB
Recommended Dilution:	ELISA: 1/1000. Western Blot: 1/100 - 1/500. Immunohistochemistry on paraffin sections: 1/50 - 1/100. Immunofluorescence: 1/10 - 1/50.
Reactivity:	Human, Mouse
Host:	Rabbit
Isotype:	Ig
Clonality:	Polyclonal
Immunogen:	KLH conjugated synthetic peptide between 353-383 amino acids from the C-terminal region of human GOT1L1
Specificity:	This antibody reacts to GOT1L1.
Formulation:	PBS State: Aff - Purified State: Liquid purified Ig fraction Preservative: 0.09% (W/V) sodium azide
Concentration:	lot specific
Purification:	Affinity chromatography on Protein A
Conjugation:	Unconjugated
Storage:	Store the antibody undiluted at 2-8°C for one month or (in aliquots) at -20°C for longer. Avoid repeated freezing and thawing.
Stability:	Shelf life: one year from despatch.
Predicted Protein Size:	47305 Da
Gene Name:	glutamic-oxaloacetic transaminase 1-like 1
Database Link:	Entrez Gene 137362 Human Q8NHS2
Synonyms:	Putative aspartate aminotransferase, cytoplasmic 2



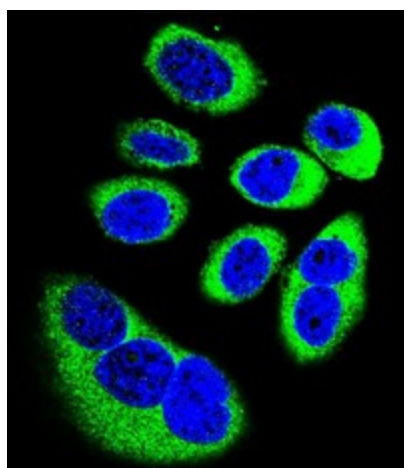
[View online »](#)

Product images:

GOT1L1 Antibody (C-term) western blot analysis in mouse kidney tissue lysates (35ug/lane). This demonstrates the GOT1L1 antibody detected the GOT1L1 protein (arrow).



GOT1L1 Antibody (C-term) immunohistochemistry analysis in formalin fixed and paraffin embedded human brain tissue followed by peroxidase conjugation of the secondary antibody and DAB staining. This data demonstrates the use of GOT1L1 Antibody (C-term) for immunohistochemistry. Clinical relevance has not been evaluated.



Confocal immunofluorescent analysis of GOT1L1 Antibody (C-term) with U-251MG cell followed by Alexa Fluor 488-conjugated goat anti-rabbit IgG (green). DAPI was used to stain the cell nuclear (blue).