

## Product datasheet for **AP51894PU-N**

### **GORASP2 (Center) Rabbit Polyclonal Antibody**

#### **Product data:**

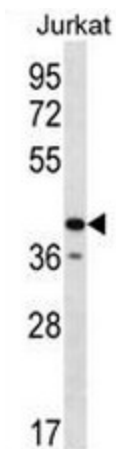
Product Type:	Primary Antibodies
Applications:	WB
Recommended Dilution:	<b>ELISA:</b> 1/1000. <b>Western Blot:</b> 1/100 - 1/500.
Reactivity:	Human
Host:	Rabbit
Isotype:	Ig
Clonality:	Polyclonal
Immunogen:	KLH conjugated synthetic peptide between 184-214 amino acids from the Central region of human GORASP2
Formulation:	PBS State: Aff - Purified State: Liquid purified Ig fraction Preservative: 0.09% (W/V) sodium azide
Concentration:	lot specific
Purification:	Affinity chromatography on Protein A
Conjugation:	Unconjugated
Storage:	Store the antibody undiluted at 2-8°C for one month or (in aliquots) at -20°C for longer. Avoid repeated freezing and thawing.
Stability:	Shelf life: one year from despatch.
Predicted Protein Size:	47145 Da
Gene Name:	golgi reassembly stacking protein 2
Database Link:	<a href="#">Entrez Gene 26003 Human Q9H8Y8</a>
Background:	The Golgi complex plays a key role in the sorting and modification of proteins exported from the endoplasmic reticulum. The protein encoded by this gene is involved in establishing the stacked structure of the Golgi apparatus.
Synonyms:	Golgi reassembly-stacking protein 2, GRS2, Golgi phosphoprotein 6, p59, Golgi marker



[View online »](#)

Protein Families: Druggable Genome

### Product images:



GORASP2 Antibody (Center) western blot analysis in Jurkat cell line lysates (35ug/lane). This demonstrates the GORASP2 antibody detected the GORASP2 protein (arrow).