

Product datasheet for **AP51886PU-N**

GNRH2 (Center) Rabbit Polyclonal Antibody

Product data:

Product Type:	Primary Antibodies
Applications:	FC, WB
Recommended Dilution:	ELISA: 1/1000. Western Blot: 1/100-1/500. Flow Cytometry: 1/10-1/50.
Reactivity:	Human
Host:	Rabbit
Isotype:	Ig
Clonality:	Polyclonal
Immunogen:	KLH conjugated synthetic peptide between 32~62 amino acids from the Central region of human GNRH2 / Progonadoliberin-2
Specificity:	This antibody recognizes Human GNRH2 / Progonadoliberin-2 (Center).
Formulation:	PBS containing 0.09% (W/V) Sodium Azide as preservative State: Aff - Purified State: Liquid purified Ig fraction
Concentration:	lot specific
Purification:	Protein A column, followed by peptide affinity purification
Conjugation:	Unconjugated
Storage:	Store undiluted at 2-8°C for one month or (in aliquots) at -20°C for longer. Avoid repeated freezing and thawing.
Stability:	Shelf life: one year from despatch.
Gene Name:	gonadotropin releasing hormone 2
Database Link:	Entrez Gene 2797 Human O43555
Background:	The protein encoded by this gene is a preproprotein that is cleaved to form a secreted 10 aa peptide hormone. The secreted decapeptide regulates reproduction in females by stimulating the secretion of both luteinizing- and follicle-stimulating hormones.
Synonyms:	GnRH-II; LH-RHII; OTTHUMP00000030076; OTTHUMP00000030077



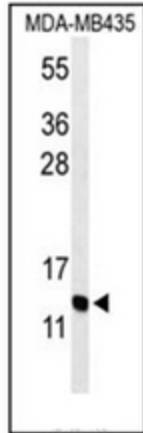
[View online »](#)

Note: **Molecular Weight:** 12918 Da

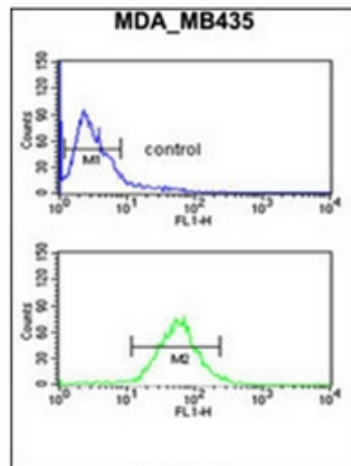
Protein Families: Druggable Genome, Secreted Protein

Protein Pathways: GnRH signaling pathway

Product images:



Western blot analysis of GNRH2 Antibody (Center) in MDA-MB435 cell line lysates (35ug/lane). GNRH2 (arrow) was detected using the purified Pab.



Flow cytometric analysis of MDA-MB435 cells using GNRH2 Antibody (Center) (bottom histogram) compared to a negative control cell (top histogram). FITC-conjugated goat-anti-rabbit secondary antibodies were used for the analysis.