

Product datasheet for **AP51884PU-N**

GNLY (N-term) Rabbit Polyclonal Antibody

Product data:

Product Type:	Primary Antibodies
Applications:	WB
Recommended Dilution:	ELISA: 1/1,000. Western blot: 1/100-1/500.
Reactivity:	Human
Host:	Rabbit
Isotype:	Ig
Clonality:	Polyclonal
Immunogen:	KLH conjugated synthetic peptide between 13-43 amino acids from the N-terminal region of Human GNLY
Specificity:	Recognizes GNLY (N-term).
Formulation:	PBS with 0.09% (W/V) Sodium Azide as preservative State: Aff - Purified State: Liquid purified Ig fraction
Concentration:	lot specific
Purification:	Protein A column, followed by peptide Affinity purification.
Conjugation:	Unconjugated
Storage:	Store the antibody undiluted at 2-8°C for one month or (in aliquots) at -20°C for longer. Avoid repeated freezing and thawing.
Stability:	Shelf life: one year from despatch.
Gene Name:	granulysin
Database Link:	Entrez Gene 10578 Human P22749
Background:	The product of this gene is a member of the saposin-like protein (SAPLIP) family and is located in the cytotoxic granules of T cells, which are released upon antigen stimulation. This protein is present in cytotoxic granules of cytotoxic T lymphocytes and natural killer cells, and it has antimicrobial activity against M. tuberculosis and other organisms. Alternatively spliced transcript variants encoding different isoforms have been identified.



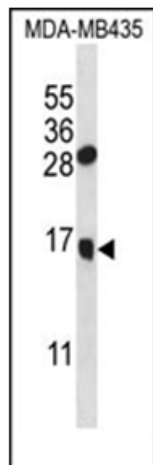
[View online »](#)

Synonyms: Protein NKG-5, Lymphokine LAG-2, GNLY, LAG2, NKG5, TLA519

Note: **Molecular Weight:** 16374 Da

Protein Families: Secreted Protein

Product images:



Western blot analysis in MDA-MB435 cell line lysates (35 ug/lane) using GNLY Antibody (C-term). This demonstrates the GNLY antibody detected the GNLY protein (arrow).