

Product datasheet for **AP51883PU-N**

GNL3L (N-term) Rabbit Polyclonal Antibody

Product data:

| | |
|-----------------------|--|
| Product Type: | Primary Antibodies |
| Applications: | FC, WB |
| Recommended Dilution: | ELISA: 1/1000. Western Blot: 1/100-1/500. Flow Cytometry: 1/10-1/50. |
| Reactivity: | Human |
| Host: | Rabbit |
| Isotype: | Ig |
| Clonality: | Polyclonal |
| Immunogen: | KLH conjugated synthetic peptide between 102-130 amino acids from the N-terminal region of Human GNL3L |
| Specificity: | This antibody recognizes Human GNL3L (N-term). |
| Formulation: | PBS containing 0.09% (W/V) Sodium Azide as preservative State: Aff - Purified State: Liquid purified Ig fraction |
| Concentration: | lot specific |
| Purification: | Protein A column, followed by peptide affinity purification |
| Conjugation: | Unconjugated |
| Storage: | Store undiluted at 2-8°C for one month or (in aliquots) at -20°C for longer. Avoid repeated freezing and thawing. |
| Stability: | Shelf life: one year from despatch. |
| Gene Name: | G protein nucleolar 3 like |
| Database Link: | Entrez Gene 54552 Human Q9NVN8 |
| Background: | The protein encoded by this gene appears to be a nucleolar GTPase that is essential for ribosomal pre-rRNA processing and cell proliferation. Two transcript variants encoding the same protein have been found for this gene. |
| Synonyms: | FLJ10613; OTTHUMP00000023374 |

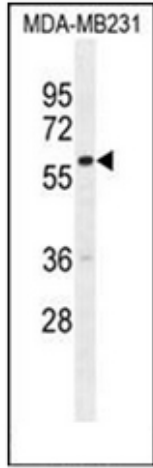


[View online »](#)

Note: **Molecular Weight:** 65573 Da

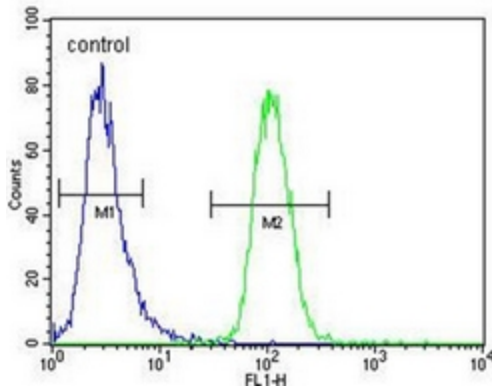
Protein Families: Protease

Product images:



Western blot analysis of GNL3L Antibody (N-term) in MDA-MB231 cell line lysates (35ug/lane). This demonstrates the GNL3L antibody detected the GNL3L protein (arrow).

MDA-MB231



Flow cytometric analysis of MDA-MB231 cells using GNL3L Antibody (N-term) (right histogram) compared to a negative control cell (left histogram). FITC-conjugated goat-anti-rabbit secondary antibodies were used for the analysis.