

## Product datasheet for **AP51882PU-N**

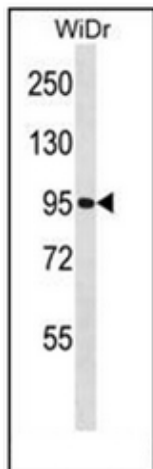
### **GNL2 (N-term) Rabbit Polyclonal Antibody**

#### **Product data:**

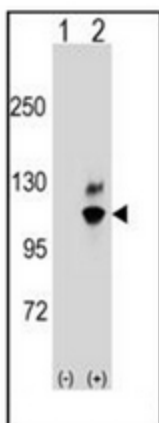
Product Type:	Primary Antibodies
Applications:	WB
Recommended Dilution:	<b>ELISA:</b> 1/1000. <b>Western Blot:</b> 1/100-1/500.
Reactivity:	Human, Mouse
Host:	Rabbit
Isotype:	Ig
Clonality:	Polyclonal
Immunogen:	KLH conjugated synthetic peptide between 17-45 amino acids from the N-terminal region of Human GNL2 / NGP1
Specificity:	This antibody recognizes Human GNL2 / NGP1 (N-term).
Formulation:	PBS containing 0.09% (W/V) Sodium Azide as preservative State: Aff - Purified State: Liquid purified Ig fraction
Concentration:	lot specific
Purification:	Protein A column, followed by peptide affinity purification
Conjugation:	Unconjugated
Storage:	Store undiluted at 2-8°C for one month or (in aliquots) at -20°C for longer. Avoid repeated freezing and thawing.
Stability:	Shelf life: one year from despatch.
Gene Name:	G protein nucleolar 2
Database Link:	<a href="#">Entrez Gene 29889 Human Q13823</a>
Background:	GNL2 is a GTPase that associates with pre-60S ribosomal subunits in the nucleolus and is required for their nuclear export and maturation (By similarity).
Synonyms:	Nucleolar GTP-binding protein 2, Autoantigen NGP-1
Note:	<b>Molecular Weight:</b> 83655 Da



[View online »](#)

**Product images:**


Western blot analysis of GNL2 / NGP1 Antibody (N-term) in WiDr cell line lysates (35ug/lane). This demonstrates the GNL2 antibody detected the GNL2 protein (arrow).



Western blot analysis of GNL2 (arrow) using GNL2 / NGP1 Antibody (N-term). 293 cell lysates (2 ug/lane) either nontransfected (Lane 1) or transiently transfected (Lane 2) with the GNL2 gene.