

Product datasheet for **AP51881PU-N**

GLCNE (GNE) (N-term) Rabbit Polyclonal Antibody

Product data:

Product Type:	Primary Antibodies
Applications:	IHC, WB
Recommended Dilution:	ELISA: 1/1000. Western Blot: 1/100-1/500. Immunohistochemistry on Paraffin Sections: 1/10-1/50.
Reactivity:	Human
Host:	Rabbit
Isotype:	Ig
Clonality:	Polyclonal
Immunogen:	KLH conjugated synthetic peptide between 168-197 amino acids from the N-terminal region of Human GNE / GLCNE
Specificity:	This antibody recognizes Human GNE / GLCNE (N-term).
Formulation:	PBS containing 0.09% (W/V) Sodium Azide as preservative State: Aff - Purified State: Liquid purified Ig fraction
Concentration:	lot specific
Purification:	Protein A column, followed by peptide affinity purification
Conjugation:	Unconjugated
Storage:	Store undiluted at 2-8°C for one month or (in aliquots) at -20°C for longer. Avoid repeated freezing and thawing.
Stability:	Shelf life: one year from despatch.
Gene Name:	glucosamine (UDP-N-acetyl)-2-epimerase/N-acetylmannosamine kinase
Database Link:	Entrez Gene 10020 Human Q9Y223



[View online »](#)

Background:

The protein encoded by this gene is a bifunctional enzyme that initiates and regulates the biosynthesis of N-acetylneuraminic acid (NeuAc), a precursor of sialic acids. It is a rate-limiting enzyme in the sialic acid biosynthetic pathway. Sialic acid modification of cell surface molecules is crucial for their function in many biologic processes, including cell adhesion and signal transduction. Differential sialylation of cell surface molecules is also implicated in the tumorigenicity and metastatic behavior of malignant cells. Mutations in this gene are associated with sialuria, autosomal recessive inclusion body myopathy, and Nonaka myopathy. Alternative splicing of this gene results in transcript variants encoding different isoforms. [provided by RefSeq].

Synonyms:

UDP-GlcNAc-2-epimerase/ManAc kinase

Note:

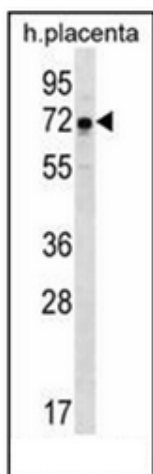
Molecular Weight: 79275 Da

Protein Families:

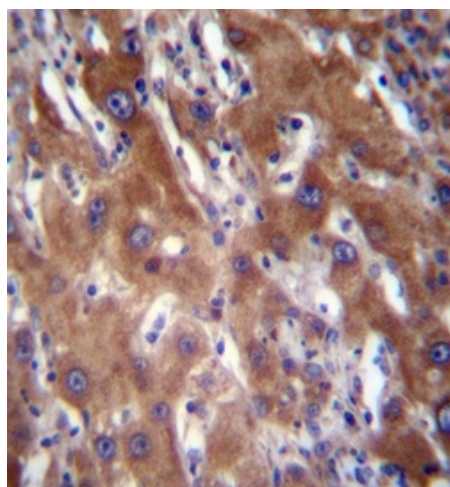
Druggable Genome

Protein Pathways:

Amino sugar and nucleotide sugar metabolism, Metabolic pathways

Product images:


Western blot analysis of GNE / GLCNE Antibody (N-term) in human placenta tissue lysates (35ug/lane). This demonstrates the GNE antibody detected the GNE protein (arrow).



Immunohistochemistry analysis in formalin fixed and paraffin embedded human liver tissue reacted with GNE / GLCNE Antibody (N-term) followed by peroxidase conjugation of the secondary antibody and DAB staining.