

Product datasheet for **AP51876PU-N**

GNAT2 (Center) Rabbit Polyclonal Antibody

Product data:

Product Type:	Primary Antibodies
Applications:	IHC, WB
Recommended Dilution:	ELISA: 1/1000. Western Blot: 1/100-1/500. Immunohistochemistry on Paraffin Sections: 1/50-1/100.
Reactivity:	Human, Mouse
Host:	Rabbit
Isotype:	Ig
Clonality:	Polyclonal
Immunogen:	KLH conjugated synthetic peptide between 140-169 amino acids from the Central region of human GNAT2
Specificity:	This antibody recognizes Human and Mouse GNAT2 / GNATC (Center).
Formulation:	PBS containing 0.09% (W/V) Sodium Azide as preservative State: Aff - Purified State: Liquid purified Ig fraction
Concentration:	lot specific
Purification:	Protein A column, followed by peptide affinity purification
Conjugation:	Unconjugated
Storage:	Store undiluted at 2-8°C for one month or (in aliquots) at -20°C for longer. Avoid repeated freezing and thawing.
Stability:	Shelf life: one year from despatch.
Gene Name:	G protein subunit alpha transducin 2
Database Link:	Entrez Gene 14686 Mouse Entrez Gene 2780 Human P19087
Background:	Transducin is a 3-subunit guanine nucleotide-binding protein (G protein) which stimulates the coupling of rhodopsin and cGMP-phosphodiesterase during visual impulses. The transducin alpha subunits in rods and cones are encoded by separate genes. This gene encodes the alpha subunit in cones.



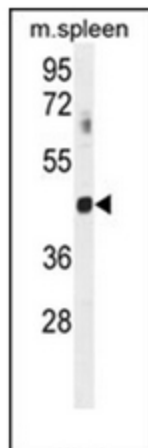
[View online »](#)

Synonyms: G protein G(t) subunit alpha-2, Transducin alpha-2 chain

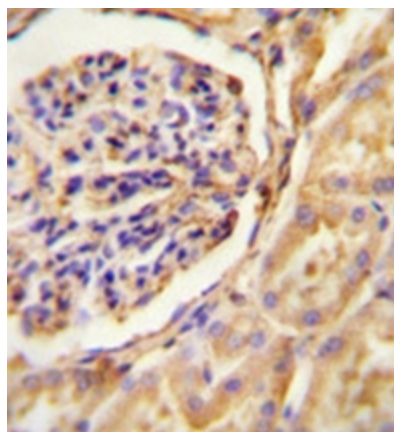
Note: **Molecular Weight:** 40176 Da

Protein Families: Druggable Genome

Product images:



Western blot analysis of GNAT2 / GNATC Antibody (Center) in mouse spleen tissue lysates (35ug/lane). This demonstrates the GNAT2 antibody detected the GNAT2 protein (arrow).



Immunohistochemistry analysis in formalin fixed and paraffin embedded human Kidney tissue reacted with GNAT2 / GNATC Antibody (Center) peroxidase conjugated to the secondary antibody and followed by DAB staining.