

Product datasheet for **AP51875PU-N**

GNAT1 (C-term) Rabbit Polyclonal Antibody

Product data:

Product Type:	Primary Antibodies
Applications:	FC, IHC, WB
Recommended Dilution:	ELISA: 1/1000. Western Blot: 1/100-1/500. Flow Cytometry: 1/10-1/50. Immunohistochemistry on Paraffin Sections: 1/50-1/100.
Reactivity:	Human
Host:	Rabbit
Isotype:	Ig
Clonality:	Polyclonal
Immunogen:	conjugated synthetic peptide between 297~326 amino acids from the C-terminal region of Human Transducin alpha-1 chain / GNAT1
Specificity:	This antibody recognizes Human Transducin alpha-1 chain / GNAT1 (C-term).
Formulation:	PBS containing 0.09% (W/V) Sodium Azide as preservative State: Aff - Purified State: Liquid purified Ig fraction
Concentration:	lot specific
Purification:	Protein A column, followed by peptide affinity purification
Conjugation:	Unconjugated
Storage:	Store undiluted at 2-8°C for one month or (in aliquots) at -20°C for longer. Avoid repeated freezing and thawing.
Stability:	Shelf life: one year from despatch.
Gene Name:	G protein subunit alpha transducin 1
Database Link:	Entrez Gene 2779 Human P11488



[View online »](#)

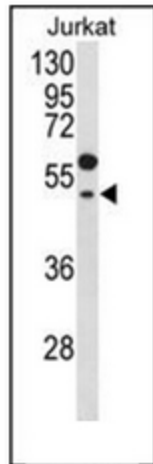
Background: Transducin is a 3-subunit guanine nucleotide-binding protein (G protein) which stimulates the coupling of rhodopsin and cGMP-phosphodiesterase during visual impulses. The transducin alpha subunits in rods and cones are encoded by separate genes. This gene encodes the alpha subunit in rods. This gene is also expressed in other cells, and has been implicated in bitter taste transduction in rat taste cells.

Synonyms: GNATR

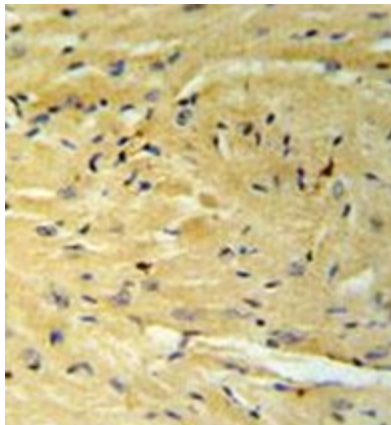
Note: **Molecular Weight:** 40041 Da

Protein Families: Druggable Genome

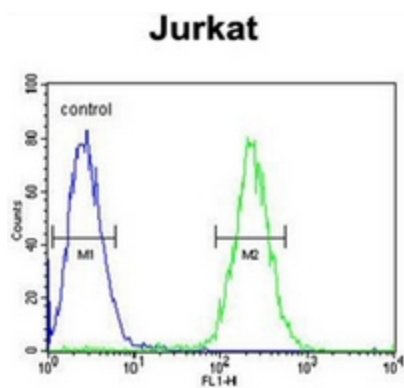
Product images:



Western blot analysis of GNAT1 Antibody (C-term) in Jurkat cell line lysates (35ug/lane). GNAT1 (arrow) was detected using the purified Pab.



Immunohistochemistry analysis in formalin fixed and paraffin embedded mouse heart tissue reacted with GNAT1 Antibody (C-term), which was peroxidase conjugated to the secondary antibody and followed by AB staining.



Flow cytometric analysis of Jurkat cells using GNAT1 Antibody (C-term) (right histogram) compared to a negative control cell (left histogram). FITC-conjugated goat-anti-rabbit secondary antibodies were used for the analysis.