

## Product datasheet for **AP51872PU-N**

### G protein alpha 16 (GNA15) (C-term) Rabbit Polyclonal Antibody

#### Product data:

Product Type:	Primary Antibodies
Applications:	WB
Recommended Dilution:	<b>ELISA:</b> 1/1000. <b>Western Blot:</b> 1/100-1/500.
Reactivity:	Human, Mouse
Host:	Rabbit
Isotype:	Ig
Clonality:	Polyclonal
Immunogen:	KLH conjugated synthetic peptide between 340-369 amino acids from the C-terminal region of human G protein alpha 15
Specificity:	This antibody recognizes Human and Mouse G protein alpha 15 (C-term).
Formulation:	PBS containing 0.09% (W/V) Sodium Azide as preservative State: Aff - Purified State: Liquid purified Ig fraction
Concentration:	lot specific
Purification:	Protein A column, followed by peptide affinity purification
Conjugation:	Unconjugated
Storage:	Store undiluted at 2-8°C for one month or (in aliquots) at -20°C for longer. Avoid repeated freezing and thawing.
Stability:	Shelf life: one year from despatch.
Gene Name:	G protein subunit alpha 15
Database Link:	<a href="#">Entrez Gene 14676 Mouse</a> <a href="#">Entrez Gene 2769 Human</a> <a href="#">P30679</a>
Background:	Guanine nucleotide-binding proteins (G proteins) are involved as modulators or transducers in various transmembrane signaling systems.
Synonyms:	G alpha-15, GNA15, GNA16
Note:	<b>Molecular Weight:</b> 43568 Da

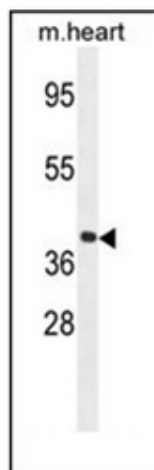


[View online »](#)

Protein Families: Druggable Genome

Protein Pathways: Calcium signaling pathway

**Product images:**



Western blot analysis of GNA15 Antibody (C-term) in mouse heart tissue lysates (35ug/lane). This demonstrates the GNA15 antibody detected the GNA15 protein (arrow).