

Product datasheet for **AP51871PU-N**

GNA14 (N-term) Rabbit Polyclonal Antibody

Product data:

Product Type:	Primary Antibodies
Applications:	IHC, WB
Recommended Dilution:	ELISA: 1/1000. Western Blot: 1/100-1/500. Immunohistochemistry on Paraffin Sections: 1/10-1/50.
Reactivity:	Human
Host:	Rabbit
Isotype:	Ig
Clonality:	Polyclonal
Immunogen:	KLH conjugated synthetic peptide between 11-41 amino acids from the N-terminal region of Human G protein alpha 14
Specificity:	This antibody recognizes Human G protein alpha 14 (N-term).
Formulation:	PBS containing 0.09% (W/V) Sodium Azide as preservative State: Aff - Purified State: Liquid purified Ig fraction
Concentration:	lot specific
Purification:	Protein A column, followed by peptide affinity purification
Conjugation:	Unconjugated
Storage:	Store undiluted at 2-8°C for one month or (in aliquots) at -20°C for longer. Avoid repeated freezing and thawing.
Stability:	Shelf life: one year from despatch.
Gene Name:	G protein subunit alpha 14
Database Link:	Entrez Gene 9630 Human O95837



[View online »](#)

Background:

This gene encodes a member of the guanine nucleotide-binding, or G protein family. G proteins are heterotrimers consisting of alpha, beta and gamma subunits. The encoded protein is a member of the alpha family of G proteins, more specifically the alpha q subfamily of G proteins. The encoded protein may play a role in pertussis-toxin resistant activation of phospholipase C-beta and its downstream effectors.

Synonyms:

G alpha-14, GNA14

Note:

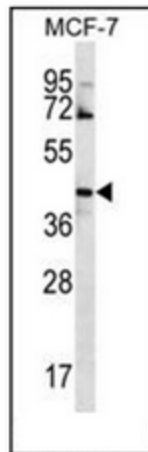
Molecular Weight: 41571 Da

Protein Families:

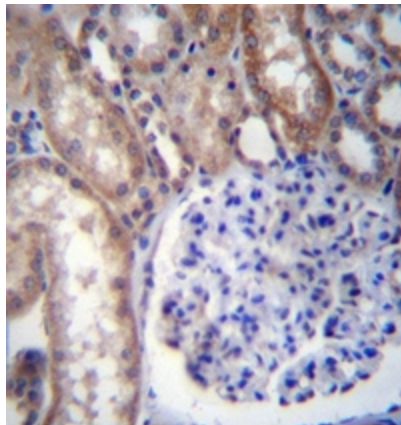
Druggable Genome

Protein Pathways:

Calcium signaling pathway

Product images:

Western blot analysis of GNA14 Antibody (N-term) in MCF-7 cell line lysates (35ug/lane). This demonstrates the GNA14 antibody detected the GNA14 protein (arrow).



Immunohistochemistry analysis in formalin fixed and paraffin embedded human kidney tissue reacted with GNA14 Antibody (N-term) followed by peroxidase conjugation of the secondary antibody and DAB staining.