

Product datasheet for **AP51869PU-N**

GMPR1 (GMPR) (C-term) Rabbit Polyclonal Antibody

Product data:

Product Type:	Primary Antibodies
Applications:	IHC, WB
Recommended Dilution:	ELISA: 1/1000. Western Blot: 1/100-1/500. Immunohistochemistry on Paraffin Sections: 1/10-1/50.
Reactivity:	Human
Host:	Rabbit
Isotype:	Ig
Clonality:	Polyclonal
Immunogen:	KLH conjugated synthetic peptide between 237-267 amino acids from the C-terminal region of human GMPR
Specificity:	This antibody recognizes Human GMP reductase 1 / GMPR1 (C-term).
Formulation:	PBS containing 0.09% (W/V) Sodium Azide as preservative State: Purified State: Liquid purified Ig fraction
Concentration:	lot specific
Purification:	Saturated Ammonium Sulfate (SAS) precipitation followed by dialysis against PBS
Conjugation:	Unconjugated
Storage:	Store undiluted at 2-8°C for one month or (in aliquots) at -20°C for longer. Avoid repeated freezing and thawing.
Stability:	Shelf life: one year from despatch.
Gene Name:	guanosine monophosphate reductase
Database Link:	Entrez Gene 2766 Human P36959
Background:	This gene encodes an enzyme that catalyzes the irreversible and NADPH-dependent reductive deamination of GMP to IMP. The protein also functions in the re-utilization of free intracellular bases and purine nucleosides.
Synonyms:	GMPR1



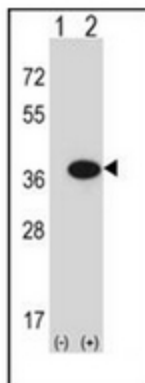
[View online »](#)

Note: **Molecular Weight:** 37419 Da

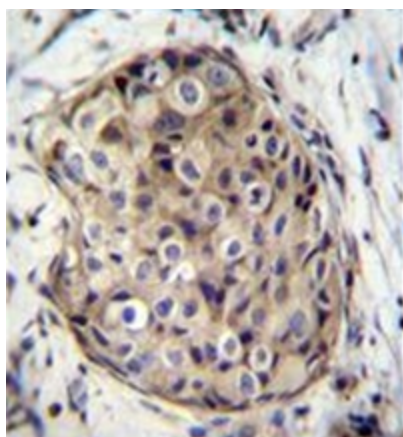
Protein Families: Druggable Genome

Protein Pathways: Purine metabolism

Product images:



Western blot analysis of GMPR (arrow) using GMP reductase 1 / GMPR1 Antibody (C-term). 293 cell lysates (2 ug/lane) either nontransfected (Lane 1) or transiently transfected (Lane 2) with the GMPR gene.



Immunohistochemistry analysis in formalin fixed and paraffin embedded human breast carcinoma reacted with GMP reductase 1 / GMPR1 Antibody (C-term) followed by peroxidase conjugation of the secondary antibody and DAB staining.