

Product datasheet for **AP51865PU-N**

GPC1 (N-term) Rabbit Polyclonal Antibody

Product data:

Product Type:	Primary Antibodies
Applications:	FC, IHC, WB
Recommended Dilution:	ELISA: 1/1000. Western Blot: 1/100-1/500. Flow Cytometry: 1/10-1/50. Immunohistochemistry on Paraffin Sections: 1/50-1/100.
Reactivity:	Human
Host:	Rabbit
Isotype:	Ig
Clonality:	Polyclonal
Immunogen:	KLH conjugated synthetic peptide between 12~41 amino acids from the N-terminal region of human Glypican-1 / GPC1
Specificity:	This antibody recognizes Human Glypican-1 / GPC1 (N-term).
Formulation:	PBS containing 0.09% (W/V) Sodium Azide as preservative State: Purified State: Liquid purified Ig fraction
Concentration:	lot specific
Purification:	Saturated Ammonium Sulfate (SAS) precipitation followed by dialysis against PBS
Conjugation:	Unconjugated
Storage:	Store undiluted at 2-8°C for one month or (in aliquots) at -20°C for longer. Avoid repeated freezing and thawing.
Stability:	Shelf life: one year from despatch.
Gene Name:	glypican 1
Database Link:	Entrez Gene 2817 Human P35052



[View online »](#)

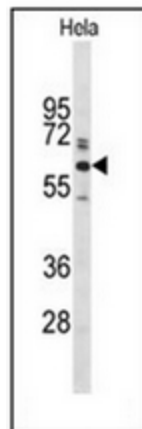
Background: Glypican-1 (GPC1) is a cell surface proteoglycan that contains heparan sulphate. The protein is attached to the cell membrane by a GPI anchor. GPC1 is required for efficient TGF-beta1 signalling in pancreatic cancer cells. Members of the glypican-related integral membrane proteoglycan family (GRIPS) may play a role in the control of cell division and growth regulation.

Synonyms: FLJ38078; glypican

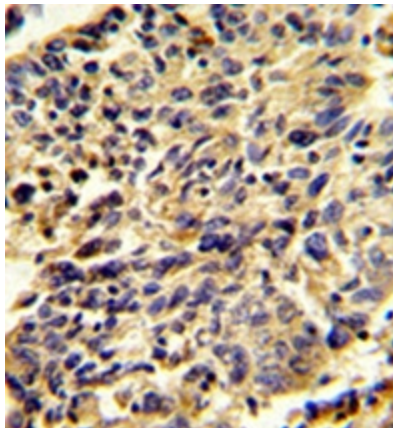
Note: **Molecular Weight:** 61680 Da

Protein Families: Druggable Genome

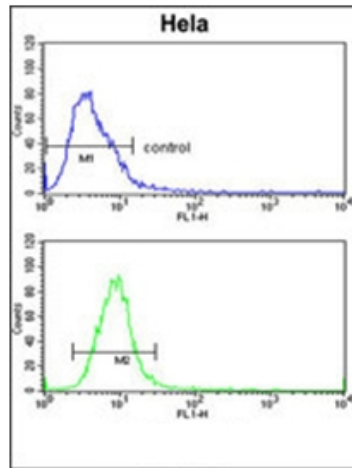
Product images:



Western blot analysis of Glypican-1 / GPC1 Antibody (N-term) in HeLa cell line lysates (35ug/lane). Glypican-1 (arrow) was detected using the purified Pab.



Immunohistochemistry analysis in formalin-fixed and paraffin-embedded human lung carcinoma reacted with Glypican-1 / GPC1 Antibody (N-term), which was peroxidase-conjugated to the secondary antibody, followed by DAB staining.



Flow cytometric analysis of HeLa cells using Glypican-1 / GPC1 Antibody (N-term) (bottom histogram) compared to a negative control cell (top histogram). FITC-conjugated goat-anti-rabbit secondary antibodies were used for the analysis.