

Product datasheet for **AP51860PU-N**

Galectin 1 (LGALS1) Rabbit Polyclonal Antibody

Product data:

Product Type:	Primary Antibodies
Applications:	WB
Recommended Dilution:	ELISA: 1/1000. Western Blot: 1/100-1/500.
Reactivity:	Human
Host:	Rabbit
Isotype:	Ig
Clonality:	Polyclonal
Immunogen:	Gst fusion protein from Human Galectin-1
Specificity:	This antibody recognizes Human Galectin-1.
Formulation:	PBS containing 0.09% (W/V) Sodium Azide as preservative State: Aff - Purified State: Liquid purified Ig fraction
Concentration:	lot specific
Purification:	Protein A column, followed by peptide affinity purification
Conjugation:	Unconjugated
Storage:	Store undiluted at 2-8°C for one month or (in aliquots) at -20°C for longer. Avoid repeated freezing and thawing.
Stability:	Shelf life: one year from despatch.
Gene Name:	galectin 1
Database Link:	Entrez Gene 3956 Human P09382
Background:	The galectins are a family of beta-galactoside-binding proteins implicated in modulating cell-cell and cell-matrix interactions. This gene product may act as an autocrine negative growth factor that regulates cell proliferation. [provided by RefSeq].
Synonyms:	LGALS1, Galectin1, Lectin galactoside-binding soluble 1, Beta-galactoside-binding lectin L-14-I, Lactose-binding lectin 1, S-Lac lectin 1, Galaptin, 14 kDa lectin, HPL, HBL, MAPK-activating protein PM12

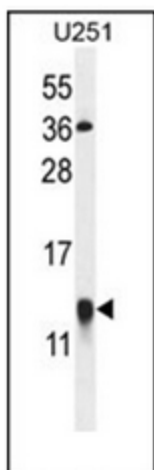


[View online »](#)

Note: **Molecular Weight:** 14716 Da

Protein Families: Druggable Genome

Product images:



Western blot analysis of Galectin-1 Antibody in U251 cell line lysates (35ug/lane).