

Product datasheet for **AP51858PU-N**

GLRB (N-term) Rabbit Polyclonal Antibody

Product data:

Product Type:	Primary Antibodies
Applications:	WB
Recommended Dilution:	ELISA: 1/1000. Western Blot: 1/100-1/500.
Reactivity:	Human, Mouse
Host:	Rabbit
Isotype:	Ig
Clonality:	Polyclonal
Immunogen:	KLH conjugated synthetic peptide between 103-132 amino acids from the N-terminal region of Human Glycine receptor beta
Specificity:	This antibody recognizes Glycine receptor beta (N-term).
Formulation:	PBS containing 0.09% (W/V) Sodium Azide as preservative State: Aff - Purified State: Liquid purified Ig fraction
Concentration:	lot specific
Purification:	Protein A column, followed by peptide affinity purification
Conjugation:	Unconjugated
Storage:	Store undiluted at 2-8°C for one month or (in aliquots) at -20°C for longer. Avoid repeated freezing and thawing.
Stability:	Shelf life: one year from despatch.
Gene Name:	glycine receptor beta
Database Link:	Entrez Gene 14658 Mouse Entrez Gene 2743 Human P48167



[View online »](#)

Background:

This gene encodes the beta subunit of the glycine receptor, which is a pentamer composed of alpha and beta subunits. The receptor functions as a neurotransmitter-gated ion channel, which produces hyperpolarization via increased chloride conductance due to the binding of glycine to the receptor. Mutations in this gene cause startle disease, also known as hereditary hyperekplexia or congenital stiff-person syndrome, a disease characterized by muscular rigidity. Alternative splicing results in multiple transcript variants.

Synonyms:

GLRB

Note:

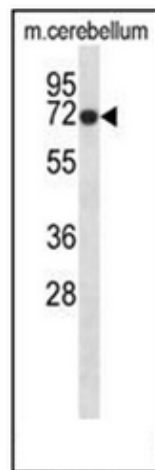
Molecular Weight: 56122 Da

Protein Families:

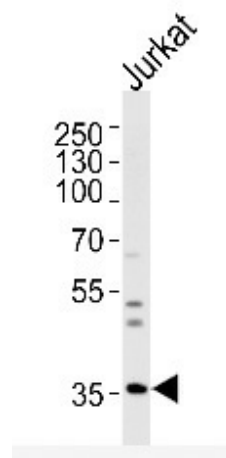
Druggable Genome, Ion Channels: Cys-loop Receptors, Transmembrane

Protein Pathways:

Neuroactive ligand-receptor interaction

Product images:


Western blot analysis of Glycine receptor beta Antibody (N-term) in mouse cerebellum tissue lysates (35ug/lane). This demonstrates the GLRB antibody detected the GLRB protein (arrow).



Western blot analysis of lysate from Jurkat cell line, using Glycine receptor beta Antibody (N-term). Antibody was diluted at 1/1000 at each lane. A Goat anti-Rabbit IgG H&L (HRP) at 1/5000 dilution was used as the secondary antibody. Lysate at 35 ug per lane.