

## Product datasheet for **AP51856PU-N**

### GLP2R (Center) Rabbit Polyclonal Antibody

#### Product data:

Product Type:	Primary Antibodies
Applications:	WB
Recommended Dilution:	<b>ELISA:</b> 1/1000. <b>Western Blot:</b> 1/100-1/500.
Reactivity:	Human
Host:	Rabbit
Isotype:	Ig
Clonality:	Polyclonal
Immunogen:	KLH conjugated synthetic peptide between 219-248 amino acids from the Central region of human GLP2R
Specificity:	This antibody recognizes Human GLP2R (Center).
Formulation:	PBS containing 0.09% (W/V) Sodium Azide as preservative State: Aff - Purified State: Liquid purified Ig fraction
Concentration:	lot specific
Purification:	Protein A column, followed by peptide affinity purification
Conjugation:	Unconjugated
Storage:	Store undiluted at 2-8°C for one month or (in aliquots) at -20°C for longer. Avoid repeated freezing and thawing.
Stability:	Shelf life: one year from despatch.
Gene Name:	glucagon like peptide 2 receptor
Database Link:	<a href="#">Entrez Gene 9340 Human O95838</a>



[View online »](#)

**Background:**

The GLP2 receptor (GLP2R) is a G protein-coupled receptor superfamily member closely related to the glucagon receptor and GLP1 receptor. Glucagon-like peptide-2 (GLP2) is a 33-amino acid proglucagon-derived peptide produced by intestinal enteroendocrine cells. Like glucagon-like peptide-1 (GLP1) and glucagon itself, it is derived from the proglucagon peptide encoded by the GCG gene. GLP2 stimulates intestinal growth and upregulates villus height in the small intestine, concomitant with increased crypt cell proliferation and decreased enterocyte apoptosis. Moreover, GLP2 prevents intestinal hypoplasia resulting from total parenteral nutrition. GLP2R, a G protein-coupled receptor superfamily member is expressed in the gut and closely related to the glucagon receptor (GCGR) and the receptor for GLP1 (GLP1R). [provided by RefSeq].

**Synonyms:**

Glucagon-like peptide 2 receptor, GLP-2-R, GLP-2R, GLP2R

**Note:**

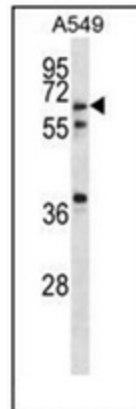
**Molecular Weight:** 63001 Da

**Protein Families:**

Druggable Genome, GPCR, Transmembrane

**Protein Pathways:**

Neuroactive ligand-receptor interaction

**Product images:**

Western blot analysis of GLP2R Antibody (Center) in A549 cell line lysates (35ug/lane). This demonstrates the GLP2R antibody detected the GLP2R protein (arrow).