

Product datasheet for **AP51853PU-N**

GLMN (C-term) Rabbit Polyclonal Antibody

Product data:

Product Type:	Primary Antibodies
Applications:	FC, IHC, WB
Recommended Dilution:	ELISA: 1/1000. Western Blot: 1/100-1/500. Immunofluorescence: 1/10-1/50. Immunohistochemistry on Paraffin Sections: 1/10-1/50.
Reactivity:	Human
Host:	Rabbit
Isotype:	Ig
Clonality:	Polyclonal
Immunogen:	KLH conjugated synthetic peptide between 505-533 amino acids from the C-terminal region of Human Glomulin
Specificity:	This antibody recognizes Human Glomulin (C-term).
Formulation:	PBS containing 0.09% (W/V) Sodium Azide as preservative State: Aff - Purified State: Liquid purified Ig fraction
Concentration:	lot specific
Purification:	Protein A column, followed by peptide affinity purification
Conjugation:	Unconjugated
Storage:	Store undiluted at 2-8°C for one month or (in aliquots) at -20°C for longer. Avoid repeated freezing and thawing.
Stability:	Shelf life: one year from despatch.
Gene Name:	glomulin, FKBP associated protein
Database Link:	Entrez Gene 11146 Human Q92990



[View online »](#)

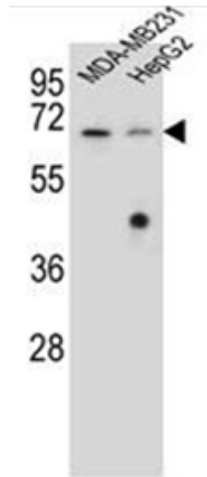
Background: This gene encodes a phosphorylated protein that is a member of a Skp1-Cullin-F-box-like complex. The protein is essential for normal development of the vasculature and mutations in this gene have been associated with glomuvenous malformations, also called glomangiomas. Alternatively spliced variants that encode different protein isoforms have been described but the full-length nature of only one has been determined. [provided by RefSeq].

Synonyms: GLMN, FAP48, FAP68, VMGLOM

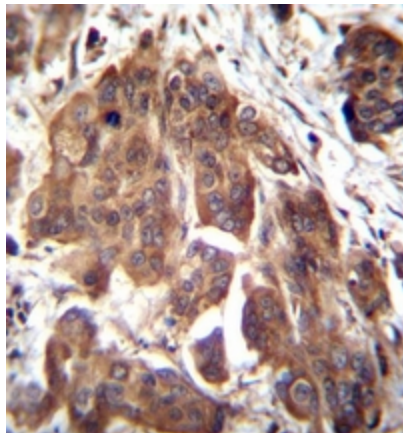
Note: **Molecular Weight:** 68208 Da

Protein Families: Druggable Genome

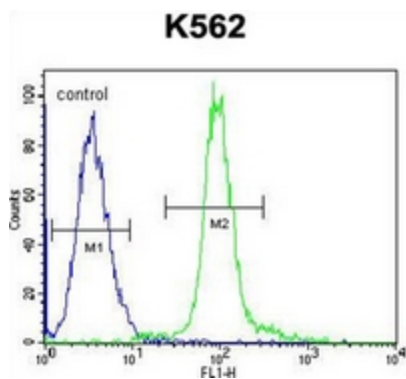
Product images:



Western blot analysis of Glomulin Antibody (C-term) in MDA-MB231, HepG2 cell line lysates (35ug/lane).



Immunohistochemistry analysis in formalin fixed and paraffin embedded human bladder carcinoma reacted with Glomulin Antibody (C-term) followed by peroxidase conjugation of the secondary antibody and DAB staining.



Flow cytometric analysis of K562 cells using Glomulin Antibody (C-term) (right histogram) compared to a negative control cell (left histogram). FITC-conjugated goat-anti-rabbit secondary antibodies were used for the analysis.