

## Product datasheet for **AP51851PU-N**

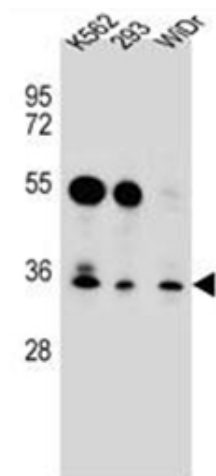
### GLIPR1L2 (N-term) Rabbit Polyclonal Antibody

#### Product data:

Product Type:	Primary Antibodies
Applications:	WB
Recommended Dilution:	<b>ELISA:</b> 1/1000. <b>Western Blot:</b> 1/100-1/500.
Reactivity:	Human
Host:	Rabbit
Isotype:	Ig
Clonality:	Polyclonal
Immunogen:	KLH conjugated synthetic peptide between 46-76 amino acids from the N-terminal region of Human GLIPR1-like protein 2
Specificity:	This antibody recognizes Human GLIPR1-like protein 2 (N-term).
Formulation:	PBS containing 0.09% (W/V) Sodium Azide as preservative State: Aff - Purified State: Liquid purified Ig fraction
Concentration:	lot specific
Purification:	Protein A column, followed by peptide affinity purification
Conjugation:	Unconjugated
Storage:	Store undiluted at 2-8°C for one month or (in aliquots) at -20°C for longer. Avoid repeated freezing and thawing.
Stability:	Shelf life: one year from despatch.
Gene Name:	GLI pathogenesis-related 1 like 2
Database Link:	<a href="#">Entrez Gene 144321 Human Q4G1C9</a>
Synonyms:	GLIPR1L2, MGC39497
Note:	<b>Molecular Weight:</b> 40179 Da



[View online »](#)

**Product images:**


Western blot analysis of GLIPR1L2 Antibody (N-term) in K562, 293, WiDr cell line lysates (35ug/lane). This demonstrates the GLIPR1L2 antibody detected the GLIPR1L2 protein (arrow).