

## Product datasheet for **AP51850PU-N**

### GLG1 (C-term) Rabbit Polyclonal Antibody

#### Product data:

Product Type:	Primary Antibodies
Applications:	IHC, WB
Recommended Dilution:	<b>ELISA:</b> 1/1000. <b>Western Blot:</b> 1/100-1/500. <b>Immunohistochemistry on Paraffin Sections:</b> 1/50-1/100.
Reactivity:	Human, Mouse
Host:	Rabbit
Isotype:	Ig
Clonality:	Polyclonal
Immunogen:	KLH conjugated synthetic peptide between 1152~1179 amino acids from the C-terminal region of human GLG1
Specificity:	This antibody recognizes Human and Mouse GLG1 (C-term).
Formulation:	PBS containing 0.09% (W/V) Sodium Azide as preservative State: Aff - Purified State: Liquid purified Ig fraction
Concentration:	lot specific
Purification:	Protein A column, followed by peptide affinity purification
Conjugation:	Unconjugated
Storage:	Store undiluted at 2-8°C for one month or (in aliquots) at -20°C for longer. Avoid repeated freezing and thawing.
Stability:	Shelf life: one year from despatch.
Gene Name:	golgi glycoprotein 1
Database Link:	<a href="#">Entrez Gene 20340 Mouse</a> <a href="#">Entrez Gene 2734 Human</a> <a href="#">Q92896</a>
Synonyms:	Golgi apparatus protein 1, CFR1, ESL1, MG160, CFR-1, Cysteine-rich fibroblast growth factor receptor, E-selectin ligand 1, ESL-1, Golgi sialoglycoprotein MG-160
Note:	<b>Molecular Weight:</b> 134552 Da

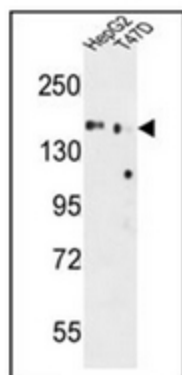


[View online »](#)

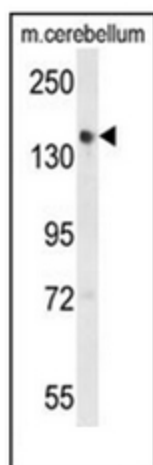
Protein Families: Druggable Genome, Transmembrane

Protein Pathways: Cell adhesion molecules (CAMs)

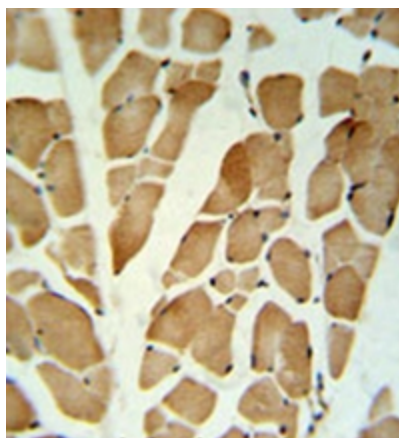
### Product images:



Western blot analysis of GLG1 Antibody (C-term) in HepG2, T47D cell line lysates (35ug/lane). This demonstrates the GLG1 antibody detected the GLG1 protein (arrow).



Western blot analysis of GLG1 Antibody (C-term) in mouse cerebellum tissue lysates (35ug/lane). GLG1 (arrow) was detected using the purified Pab.



Immunohistochemistry analysis in formalin fixed and paraffin embedded skeletal muscle reacted with GLG1 Antibody (C-term), which was peroxidase conjugated to the secondary antibody and followed by DAB staining.