

Product datasheet for **AP51849PU-N**

GLDC (N-term) Rabbit Polyclonal Antibody

Product data:

Product Type:	Primary Antibodies
Applications:	WB
Recommended Dilution:	ELISA: 1/1000. Western Blot: 1/100-1/500.
Reactivity:	Human, Mouse
Host:	Rabbit
Isotype:	Ig
Clonality:	Polyclonal
Immunogen:	KLH conjugated synthetic peptide between 56–85 amino acids from the N-terminal region of Human GLDC
Specificity:	This antibody recognizes Human and Mouse GLDC (N-term).
Formulation:	PBS containing 0.09% (W/V) Sodium Azide as preservative State: Aff - Purified State: Liquid purified Ig fraction
Concentration:	lot specific
Purification:	Protein A column, followed by peptide affinity purification
Conjugation:	Unconjugated
Storage:	Store undiluted at 2-8°C for one month or (in aliquots) at -20°C for longer. Avoid repeated freezing and thawing.
Stability:	Shelf life: one year from despatch.
Gene Name:	glycine decarboxylase
Database Link:	Entrez Gene 104174 Mouse Entrez Gene 2731 Human P23378



[View online »](#)

Background: Degradation of glycine is brought about by the glycine cleavage system, which is composed of four mitochondrial protein components: P protein (a pyridoxal phosphate-dependent glycine decarboxylase), H protein (a lipoic acid-containing protein), T protein (a tetrahydrofolate-requiring enzyme), and L protein (a lipoamide dehydrogenase). The protein is the P protein, which binds to glycine and enables the methylamine group from glycine to be transferred to the T protein. Defects in this gene are a cause of nonketotic hyperglycinemia (NKH).

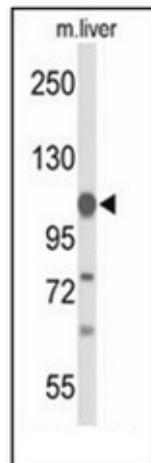
Synonyms: GCSP, Glycine cleavage system P protein, Glycine decarboxylase, Glycine dehydrogenase (aminomethyl-transferring), Glycine dehydrogenase (decarboxylating), mitochondrial

Note: **Molecular Weight:** 112730 Da

Protein Families: Druggable Genome

Protein Pathways: Glycine, serine and threonine metabolism, Metabolic pathways

Product images:



Western blot analysis of GLDC Antibody (N-term) in mouse liver tissue lysates (35ug/lane). GLDC (arrow) was detected using the purified Pab.