

## Product datasheet for **AP51845PU-N**

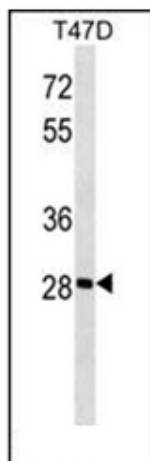
### GK5 (N-term) Rabbit Polyclonal Antibody

#### Product data:

Product Type:	Primary Antibodies
Applications:	WB
Recommended Dilution:	<b>ELISA:</b> 1/1000. <b>Western Blot:</b> 1/100-1/500.
Reactivity:	Human
Host:	Rabbit
Isotype:	Ig
Clonality:	Polyclonal
Immunogen:	KLH conjugated synthetic peptide between 1-30 amino acids from the N-terminal region of Human MGC40579
Specificity:	This antibody recognizes Human MGC40579 (N-term).
Formulation:	PBS containing 0.09% (W/V) Sodium Azide as preservative State: Aff - Purified State: Liquid purified Ig fraction
Concentration:	lot specific
Purification:	Protein A column, followed by peptide affinity purification
Conjugation:	Unconjugated
Storage:	Store undiluted at 2-8°C for one month or (in aliquots) at -20°C for longer. Avoid repeated freezing and thawing.
Stability:	Shelf life: one year from despatch.
Gene Name:	glycerol kinase 5 (putative)
Database Link:	<a href="#">Entrez Gene 256356 Human Q6ZS86</a>
Background:	GK5 belongs to the FGGY kinase family.
Synonyms:	Putative glycerol kinase 5, GK5
Note:	<b>Molecular Weight:</b> 34kd Isoform 2. 59168 Da
Protein Families:	Druggable Genome



[View online »](#)

**Product images:**

Western blot analysis of MGC40579 Antibody (N-term) in T47D cell line lysates (35ug/lane). This demonstrates the GK5 antibody detected the GK5 protein (arrow).