

Product datasheet for **AP51843PU-N**

GIPC (GIPC1) (N-term) Rabbit Polyclonal Antibody

Product data:

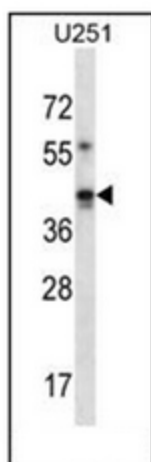
Product Type:	Primary Antibodies
Applications:	WB
Recommended Dilution:	ELISA: 1/1000. Western Blot: 1/100-1/500.
Reactivity:	Human, Mouse
Host:	Rabbit
Isotype:	Ig
Clonality:	Polyclonal
Immunogen:	KLH conjugated synthetic peptide between 51-81 amino acids from the N-terminal region of human GIPC1
Specificity:	This antibody recognizes Human and Mouse GIPC1 (N-term).
Formulation:	PBS containing 0.09% (W/V) Sodium Azide as preservative State: Aff - Purified State: Liquid purified Ig fraction
Concentration:	lot specific
Purification:	Protein A column, followed by peptide affinity purification
Conjugation:	Unconjugated
Storage:	Store undiluted at 2-8°C for one month or (in aliquots) at -20°C for longer. Avoid repeated freezing and thawing.
Stability:	Shelf life: one year from despatch.
Gene Name:	GIPC PDZ domain containing family member 1
Database Link:	Entrez Gene 67903 Mouse Entrez Gene 10755 Human O14908
Background:	GIPC1 is a scaffolding protein that regulates cell surface receptor expression and trafficking (Lee et al., 2008 [PubMed 18775991])
Synonyms:	GIPC, TIP-2, TIP2, C19orf3, RGS19IP1
Note:	Molecular Weight: 36049 Da



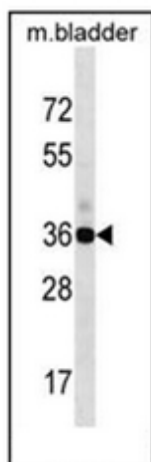
[View online »](#)

Protein Families: Druggable Genome

Product images:



Western blot analysis of GIPC1 Antibody (N-term) in U251 cell line lysates (35ug/lane). This demonstrates the GIPC1 antibody detected the GIPC1 protein (arrow).



Western blot analysis of GIPC1 Antibody (N-term) in mouse bladder tissue lysates (35ug/lane). This demonstrates the GIPC1 antibody detected the GIPC1 protein (arrow).