

Product datasheet for **AP51842PU-N**

PSF1 (GINS1) (N-term) Rabbit Polyclonal Antibody

Product data:

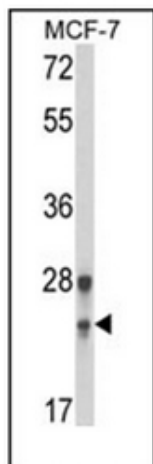
Product Type:	Primary Antibodies
Applications:	WB
Recommended Dilution:	ELISA: 1/1000. Western Blot: 1/100-1/500.
Reactivity:	Human
Host:	Rabbit
Isotype:	Ig
Clonality:	Polyclonal
Immunogen:	KLH conjugated synthetic peptide between 2~32 amino acids from the N-terminal region of human GINS1
Specificity:	This antibody recognizes Human GINS1 (N-term).
Formulation:	PBS containing 0.09% (W/V) Sodium Azide as preservative State: Aff - Purified State: Liquid purified Ig fraction
Concentration:	lot specific
Purification:	Protein A column, followed by peptide affinity purification
Conjugation:	Unconjugated
Storage:	Store undiluted at 2-8°C for one month or (in aliquots) at -20°C for longer. Avoid repeated freezing and thawing.
Stability:	Shelf life: one year from despatch.
Gene Name:	GINS complex subunit 1
Database Link:	Entrez Gene 9837 Human Q14691
Background:	The yeast heterotetrameric GINS complex is made up of Sld5 (GINS4; MIM 610611), Psf1, Psf2 (GINS2; MIM 610609), and Psf3 (GINS3; MIM 610610). The formation of the GINS complex is essential for the initiation of DNA replication in yeast and Xenopus egg extracts (Ueno et al., 2005 [PubMed 16287864]).
Synonyms:	GINS1, KIAA0186, PSF1, GINS complex subunit 1



[View online »](#)

Note: **Molecular Weight:** 22988 Da

Product images:



Western blot analysis of GINS1 Antibody (N-term) in MCF-7 cell line lysates (35ug/lane). GINS1 (arrow) was detected using the purified Pab.