

Product datasheet for **AP51838PU-N**

GIGYF1 (Center) Rabbit Polyclonal Antibody

Product data:

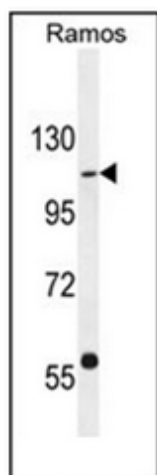
Product Type:	Primary Antibodies
Applications:	WB
Recommended Dilution:	ELISA: 1/1000. Western Blot: 1/100-1/500.
Reactivity:	Human
Host:	Rabbit
Isotype:	Ig
Clonality:	Polyclonal
Immunogen:	KLH conjugated synthetic peptide between 673-702 amino acids from the Central region of Human GIGYF1
Specificity:	This antibody recognizes Human GIGYF1 (Center).
Formulation:	PBS containing 0.09% (W/V) Sodium Azide as preservative State: Aff - Purified State: Liquid purified Ig fraction
Concentration:	lot specific
Purification:	Protein A column, followed by peptide affinity purification
Conjugation:	Unconjugated
Storage:	Store undiluted at 2-8°C for one month or (in aliquots) at -20°C for longer. Avoid repeated freezing and thawing.
Stability:	Shelf life: one year from despatch.
Gene Name:	GRB10 interacting GYF protein 1
Database Link:	Entrez Gene 64599 Human O75420
Background:	May act cooperatively with GRB10 to regulate tyrosine kinase receptor signaling. May increase IGF1 receptor phosphorylation under IGF1 stimulation as well as phosphorylation of IRS1 and SHC1 (By similarity).
Synonyms:	CDS2, PERQ1



[View online »](#)

Note: **Molecular Weight:** 114601 Da

Product images:



Western blot analysis of GIGYF1 Antibody (Center) in Ramos cell line lysates (35ug/lane). This demonstrates the GIGYF1 antibody detected the GIGYF1 protein (arrow).