

Product datasheet for **AP51837PU-N**

Intrinsic Factor (GIF) (Center) Rabbit Polyclonal Antibody

Product data:

Product Type:	Primary Antibodies
Applications:	FC, IF, IHC, WB
Recommended Dilution:	Western Blot: 1/1000. Immunofluorescence: 1/10-1/50. Flow Cytometry: 1/10-1/50. Immunohistochemistry on Paraffin Sections: 1/10-1/50.
Reactivity:	Human
Host:	Rabbit
Isotype:	Ig
Clonality:	Polyclonal
Immunogen:	KLH conjugated synthetic peptide between 189 - 218 amino acids from the Central region of Human Gastric Intrinsic factor (GIF).
Specificity:	This antibody recognizes Human Intrinsic factor (Center).
Formulation:	PBS containing 0.09% (W/V) Sodium Azide as preservative State: Aff - Purified State: Liquid purified Ig fraction
Concentration:	lot specific
Purification:	Protein A column, followed by peptide affinity purification
Conjugation:	Unconjugated
Storage:	Store undiluted at 2-8°C for one month or (in aliquots) at -20°C for longer. Avoid repeated freezing and thawing.
Stability:	Shelf life: one year from despatch.
Gene Name:	gastric intrinsic factor
Database Link:	Entrez Gene 2694 Human P27352



[View online »](#)

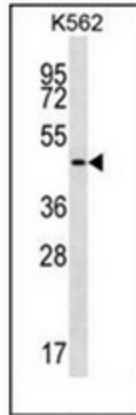
Background: This gene is a member of the cobalamin transport protein family. It encodes a glycoprotein secreted by parietal cells of the gastric mucosa and is required for adequate absorption of vitamin B12. Vitamin B12 is necessary for erythrocyte maturation and mutations in this gene may lead to congenital pernicious anemia.

Synonyms: Gastric intrinsic factor, GIF, IFMH, INF

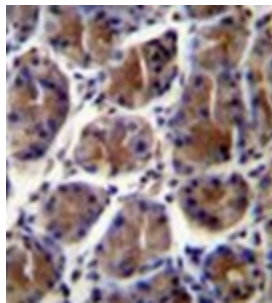
Note: **Molecular Weight:** 45416 Da

Protein Families: Secreted Protein

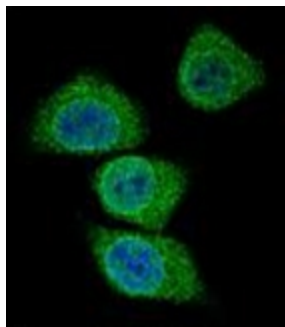
Product images:



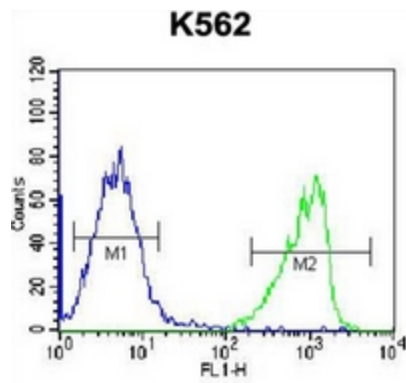
Western blot analysis of Intrinsic factor Antibody (Center) in K562 cell line lysates (35ug/lane). This demonstrates the GIF antibody detected the GIF protein (arrow).



Immunohistochemistry analysis in formalin fixed and paraffin embedded human stomach tissue reacted with Intrinsic factor Antibody (Center) followed by peroxidase conjugation of the secondary antibody and DAB staining.



Confocal immunofluorescent analysis of Intrinsic factor Antibody (Center) with 293 cell followed by Alexa Fluor 488-conjugated goat anti-rabbit IgG (green). DAPI was used to stain the cell nuclear (blue).



Flow cytometric analysis of K562 cells using Intrinsic factor Antibody (Center) (right histogram) compared to a negative control cell (left histogram). FITC-conjugated goat-anti-rabbit secondary antibodies were used for the analysis.