

## Product datasheet for **AP51836PU-N**

### Ghrelin Receptor (GHSR) (C-term) Rabbit Polyclonal Antibody

#### Product data:

Product Type:	Primary Antibodies
Applications:	IHC, WB
Recommended Dilution:	<b>ELISA:</b> 1/1000. <b>Western Blot:</b> 1/1000. <b>Immunohistochemistry on Paraffin Sections:</b> 1/50-1/100.
Reactivity:	Human, Mouse
Host:	Rabbit
Isotype:	Ig
Clonality:	Polyclonal
Immunogen:	KLH conjugated synthetic peptide between 326-357 amino acids from the C-terminal region of Human Ghrelin receptor / GHSR
Specificity:	This antibody recognizes Human and Mouse Ghrelin receptor / GHSR (C-term).
Formulation:	PBS containing 0.09% (W/V) Sodium Azide as preservative State: Aff - Purified State: Liquid purified Ig fraction
Concentration:	lot specific
Purification:	Protein A column, followed by peptide affinity purification
Conjugation:	Unconjugated
Storage:	Store undiluted at 2-8°C for one month or (in aliquots) at -20°C for longer. Avoid repeated freezing and thawing.
Stability:	Shelf life: one year from despatch.
Gene Name:	growth hormone secretagogue receptor
Database Link:	<a href="#">Entrez Gene 208188 Mouse</a> <a href="#">Entrez Gene 2693 Human</a> <a href="#">Q92847</a>



[View online »](#)

**Background:**

This gene encodes a member of the G-protein coupled receptor family. The encoded protein may play a role in energy homeostasis and regulation of body weight. Two identified transcript variants are expressed in several tissues and are evolutionary conserved in fish and swine. One transcript, 1a, excises an intron and encodes the functional protein; this protein is the receptor for the Ghrelin ligand and defines a neuroendocrine pathway for growth hormone release. The second transcript (1b) retains the intron and does not function as a receptor for Ghrelin; however, it may function to attenuate activity of isoform 1a. Mutations in this gene are associated with autosomal idiopathic short stature.

**Synonyms:**

GH-releasing peptide receptor, GHRP

**Note:**

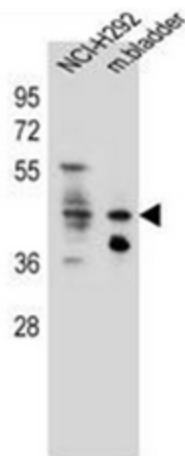
**Molecular Weight:** 41329 Da

**Protein Families:**

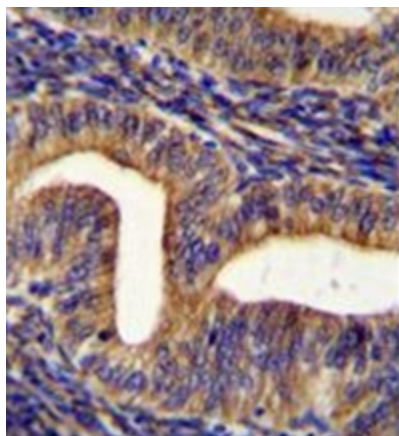
Druggable Genome, GPCR, Transmembrane

**Protein Pathways:**

Neuroactive ligand-receptor interaction

**Product images:**

Western blot analysis of Ghrelin receptor / GHSR Antibody (C-term) in NCI-H292 cell line and mouse bladder tissue lysates (35ug/lane). This demonstrates the GHSR antibody detected the GHSR protein (arrow).



Immunohistochemistry analysis in formalin fixed and paraffin embedded human uterus tissue reacted with Ghrelin receptor / GHSR Antibody (C-term) followed by peroxidase conjugation of the secondary antibody and DAB staining.