

Product datasheet for **AP51833PU-N**

GGTLC2 (Center) Rabbit Polyclonal Antibody

Product data:

Product Type:	Primary Antibodies
Applications:	FC, IHC, WB
Recommended Dilution:	ELISA: 1/1000. Western Blot: 1/100-1/500. Flow Cytometry: 1/10-1/50. Immunohistochemistry on Paraffin Sections: 1/50-1/100.
Reactivity:	Human
Host:	Rabbit
Isotype:	Ig
Clonality:	Polyclonal
Immunogen:	KLH conjugated synthetic peptide between 140-169 amino acids from the Central region of human GGTLC2
Specificity:	This antibody recognizes Human GGTLC2 (Center).
Formulation:	PBS containing 0.09% (W/V) Sodium Azide as preservative State: Aff - Purified State: Liquid purified Ig fraction
Concentration:	lot specific
Purification:	Protein A column, followed by peptide affinity purification
Conjugation:	Unconjugated
Storage:	Store undiluted at 2-8°C for one month or (in aliquots) at -20°C for longer. Avoid repeated freezing and thawing.
Stability:	Shelf life: one year from despatch.
Gene Name:	gamma-glutamyltransferase light chain 2



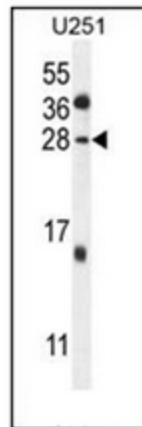
Database Link: [Entrez Gene 91227 Human Q14390](#)

Background: Gamma-glutamyltransferase-1 (GGT1; MIM 612346) is a membrane-bound extracellular enzyme that cleaves gamma-glutamyl peptide bonds in glutathione and other peptides and transfers the gamma-glutamyl moiety to acceptors. Autocatalytic cleavage of the GGT1 precursor polypeptide produces a heavy chain and a light chain that associate with each other to form the functional enzyme. Light chain-only GGTs, such as GGTLC2, contain a region corresponding to the GGT1 light chain, but they lack the membrane-anchoring heavy chain region (Heisterkamp et al., 2008 [PubMed 18357469]). [supplied by OMIM].

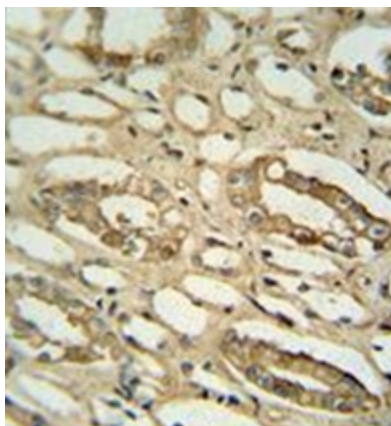
Synonyms: Gamma-glutamyltransferase light chain 2,GGTL4

Note: **Molecular Weight:** 23661 Da

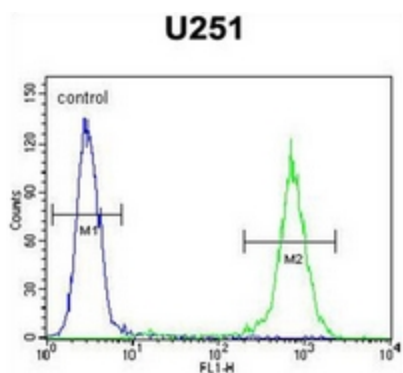
Product images:



Western blot analysis of GGTLC2 Antibody (Center) in U251 cell line lysates (35ug/lane). This demonstrates the GGTLC2 antibody detected the GGTLC2 protein (arrow).



Immunohistochemistry analysis in formalin fixed and paraffin embedded human lung tissue reacted with GGTLC2 Antibody (Center), peroxidase conjugated to the secondary antibody and followed by DAB staining.



Flow cytometric analysis of U251 cells using GGTLC2 Antibody (Center) (right histogram) compared to a negative control cell (left histogram). FITC-conjugated goat-anti-rabbit secondary antibodies were used for the analysis