

## Product datasheet for **AP51832PU-N**

### GGT2 (N-term) Rabbit Polyclonal Antibody

#### Product data:

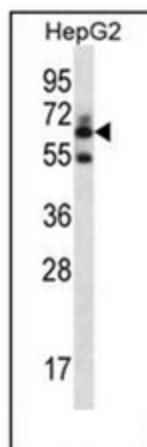
Product Type:	Primary Antibodies
Applications:	IHC, WB
Recommended Dilution:	<b>ELISA:</b> 1/1000. <b>Western Blot:</b> 1/100-1/500. <b>Immunohistochemistry on Paraffin Sections:</b> 1/10-1/50.
Reactivity:	Human
Host:	Rabbit
Isotype:	Ig
Clonality:	Polyclonal
Immunogen:	KLH conjugated synthetic peptide between 19-48 amino acids from the N-terminal region of human GGT2
Specificity:	This antibody recognizes Human GGT2 (N-term).
Formulation:	PBS containing 0.09% (W/V) Sodium Azide as preservative State: Aff - Purified State: Liquid purified Ig fraction
Concentration:	lot specific
Purification:	Protein A column, followed by peptide affinity purification
Conjugation:	Unconjugated
Storage:	Store undiluted at 2-8°C for one month or (in aliquots) at -20°C for longer. Avoid repeated freezing and thawing.
Stability:	Shelf life: one year from despatch.
Gene Name:	gamma-glutamyltransferase 2
Database Link:	<a href="#">Entrez Gene 728441 Human P36268</a>
Background:	GGT2 initiates extracellular glutathione (GSH) breakdown; catalyzes the transfer of the glutamyl moiety of glutathione to amino acids and dipeptide acceptors (By similarity).
Synonyms:	Gamma-glutamyltranspeptidase 2, Gamma-glutamyltransferase 2



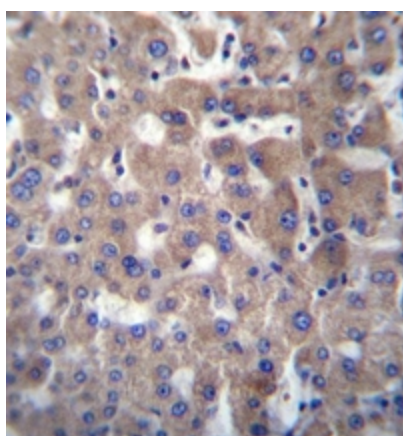
[View online »](#)

Note: **Molecular Weight:** 61771 Da

**Product images:**



Western blot analysis of GGT2 Antibody (N-term) in HepG2 cell line lysates (35ug/lane). This demonstrates the GGT2 antibody detected the GGT2 protein (arrow).



Immunohistochemistry analysis of GGT2 Antibody (N-term) in formalin fixed and paraffin embedded human liver tissue followed by peroxidase conjugation of the secondary antibody and DAB staining.