

Product datasheet for **AP51831PU-N**

GGPS1 (Center) Rabbit Polyclonal Antibody

Product data:

Product Type:	Primary Antibodies
Applications:	WB
Recommended Dilution:	ELISA: 1/1000. Western Blot: 1/100-1/500.
Reactivity:	Human
Host:	Rabbit
Isotype:	Ig
Clonality:	Polyclonal
Immunogen:	KLH conjugated synthetic peptide between 173-202 amino acids from the Central region of human GGPS1
Specificity:	This antibody recognizes Human GGPS1 (Center).
Formulation:	PBS containing 0.09% (W/V) Sodium Azide as preservative State: Aff - Purified State: Liquid purified Ig fraction
Concentration:	lot specific
Purification:	Affinity Chromatography on Protein A
Conjugation:	Unconjugated
Storage:	Store undiluted at 2-8°C for one month or (in aliquots) at -20°C for longer. Avoid repeated freezing and thawing.
Stability:	Shelf life: one year from despatch.
Gene Name:	geranylgeranyl diphosphate synthase 1
Database Link:	Entrez Gene 9453 Human O95749



[View online »](#)

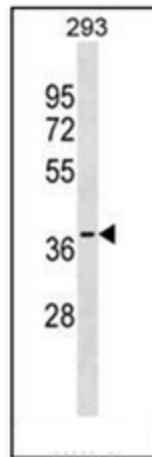
Background: This gene is a member of the prenyltransferase family and encodes a protein with geranylgeranyl diphosphate (GGPP) synthase activity. The enzyme catalyzes the synthesis of GGPP from farnesyl diphosphate and isopentenyl diphosphate. GGPP is an important molecule responsible for the C20-prenylation of proteins and for the regulation of a nuclear hormone receptor. Alternate transcriptional splice variants, both protein-coding and non-protein-coding, have been found for this gene. [provided by RefSeq].

Synonyms: GGPPSase, GGPS1

Note: **Molecular Weight:** 34871 Da

Protein Pathways: Metabolic pathways, Terpenoid backbone biosynthesis

Product images:



Western blot analysis of GGPS1 Antibody (Center) (in 293 cell line lysates (35ug/lane). This demonstrates the GGPS1 antibody detected the GGPS1 protein (arrow).