

Product datasheet for **AP51830PU-N**

GGH (N-term) Rabbit Polyclonal Antibody

Product data:

Product Type:	Primary Antibodies
Applications:	FC, IHC, WB
Recommended Dilution:	ELISA: 1/1000. Western Blot: 1/100-1/500. Flow Cytometry: 1/10-1/50. Immunohistochemistry on Paraffin Sections: 1/50-1/100.
Reactivity:	Human
Host:	Rabbit
Isotype:	Ig
Clonality:	Polyclonal
Immunogen:	KLH conjugated synthetic peptide between 14-42 amino acids from the N-terminal region of human GGH
Specificity:	This antibody recognizes Human Gamma-glutamyl hydrolase / GGH (N-term).
Formulation:	PBS containing 0.09% (W/V) Sodium Azide as preservative State: Aff - Purified State: Liquid purified Ig fraction
Concentration:	lot specific
Purification:	Affinity Chromatography on Protein A
Storage:	Store undiluted at 2-8°C for one month or (in aliquots) at -20°C for longer. Avoid repeated freezing and thawing.
Stability:	Shelf life: one year from despatch.
Gene Name:	Homo sapiens gamma-glutamyl hydrolase (GGH)
Database Link:	Entrez Gene 8836 Human
Background:	This gene catalyzes the hydrolysis of folylpoly-gamma-glutamates and antifolylpoly-gamma-glutamates by the removal of gamma-linked polyglutamates and glutamate. [provided by RefSeq].
Synonyms:	Conjugase, GH
Note:	Molecular Weight: 35964 Da

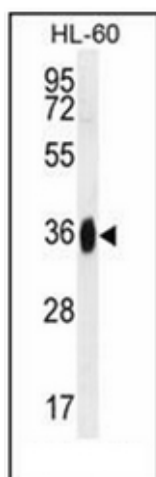


[View online »](#)

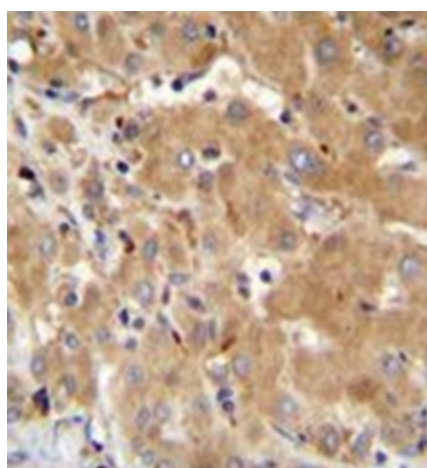
Protein Families: Druggable Genome, Protease, Secreted Protein

Protein Pathways: Folate biosynthesis

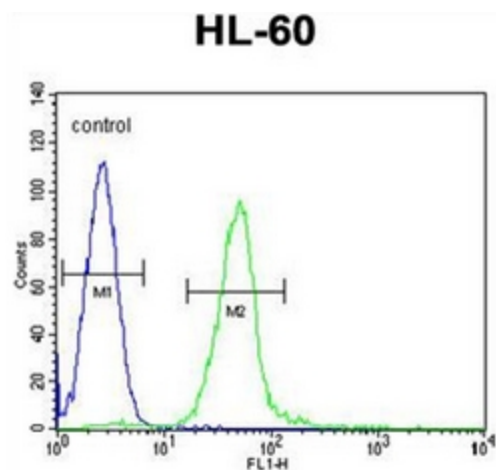
Product images:



Western blot analysis of GGH Antibody (N-term) in HL-60 cell line lysates (35ug/lane). This demonstrates the GGH antibody detected the GGH protein (arrow).



Formalin fixed and paraffin embedded human liver tissue reacted with GGH Antibody (N-term) followed by peroxidase conjugation of the secondary antibody and DAB staining.



Flow cytometric analysis of HL-60 cells using GGH Antibody (N-term) (right histogram) compared to a negative control cell (left histogram). FITC-conjugated goat-anti-rabbit secondary antibodies were used for the analysis.