

## Product datasheet for **AP51829PU-N**

### GGH (C-term) Rabbit Polyclonal Antibody

#### Product data:

Product Type:	Primary Antibodies
Applications:	IF, IHC, WB
Recommended Dilution:	<b>ELISA:</b> 1/1000. <b>Western Blot:</b> 1/100-1/500. <b>Immunofluorescence:</b> 1/10-1/50. <b>Immunohistochemistry on Paraffin Sections:</b> 1/10-1/50.
Reactivity:	Human
Host:	Rabbit
Isotype:	Ig
Clonality:	Polyclonal
Immunogen:	KLH conjugated synthetic peptide between 236-264 amino acids from the C-terminal region of human GGH
Specificity:	This antibody recognizes Human Gamma-glutamyl hydrolase / GGH (C-term).
Formulation:	PBS containing 0.09% (W/V) Sodium Azide as preservative State: Aff - Purified State: Liquid purified Ig fraction
Concentration:	lot specific
Purification:	Affinity Chromatography on Protein A
Conjugation:	Unconjugated
Storage:	Store undiluted at 2-8°C for one month or (in aliquots) at -20°C for longer. Avoid repeated freezing and thawing.
Stability:	Shelf life: one year from despatch.
Gene Name:	gamma-glutamyl hydrolase
Database Link:	<a href="#">Entrez Gene 8836 Human Q92820</a>
Background:	This gene catalyzes the hydrolysis of folylpoly-gamma-glutamates and antifolylpoly-gamma-glutamates by the removal of gamma-linked polyglutamates and glutamate. [provided by RefSeq].



[View online »](#)

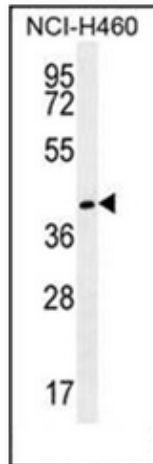
**Synonyms:** Conjugase, GH

**Note:** **Molecular Weight:** 35964 Da

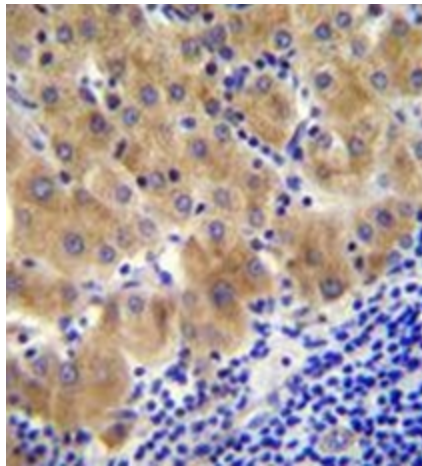
**Protein Families:** Druggable Genome, Protease, Secreted Protein

**Protein Pathways:** Folate biosynthesis

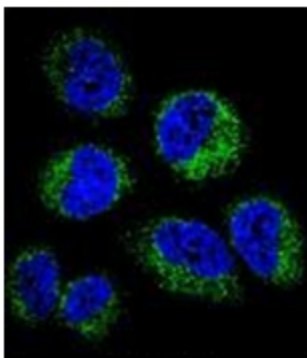
**Product images:**



Western blot analysis of GGH Antibody (C-term) in NCI-H460 cell line lysates (35ug/lane). This demonstrates the GGH antibody detected the GGH protein (arrow).



Formalin fixed and paraffin embedded human liver tissue reacted with GGH Antibody (C-term) followed by peroxidase conjugation of the secondary antibody and DAB staining.



Confocal immunofluorescent analysis of GGH Antibody (C-term) with NCI-H460 cell followed by Alexa Fluor 488-conjugated goat anti-rabbit IgG (green). DAPI was used to stain the cell nuclear (blue).