

Product datasheet for **AP51827PU-N**

GGCT (C-term) Rabbit Polyclonal Antibody

Product data:

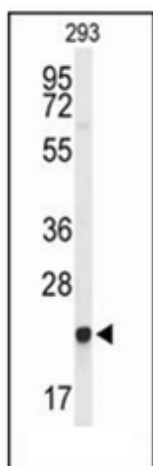
Product Type:	Primary Antibodies
Applications:	WB
Recommended Dilution:	ELISA: 1/1000. Western Blot: 1/100-1/500.
Reactivity:	Human
Host:	Rabbit
Isotype:	Ig
Clonality:	Polyclonal
Immunogen:	KLH conjugated synthetic peptide between 146~176 amino acids from the C-terminal region of human GGCT
Specificity:	This antibody recognizes Human GGCT (C-term).
Formulation:	PBS containing 0.09% (W/V) Sodium Azide as preservative State: Aff - Purified State: Liquid purified Ig fraction
Concentration:	lot specific
Purification:	Affinity Chromatography on Protein A
Conjugation:	Unconjugated
Storage:	Store undiluted at 2-8°C for one month or (in aliquots) at -20°C for longer. Avoid repeated freezing and thawing.
Stability:	Shelf life: one year from despatch.
Gene Name:	gamma-glutamylcyclotransferase
Database Link:	Entrez Gene 79017 Human O75223
Background:	GGCT (EC 2.3.2.4) catalyzes the formation of 5-oxoproline (pyroglutamic acid) from gamma-glutamyl dipeptides and may play a significant role in glutathione homeostasis.
Synonyms:	Gamma-glutamylcyclotransferase, C7orf24, CRF21
Note:	Molecular Weight: 21008 Da



[View online »](#)

Protein Pathways: Glutathione metabolism

Product images:



Western blot analysis of GGCT Antibody (C-term) in 293 cell line lysates (35ug/lane). GGCT (arrow) was detected using the purified Pab.